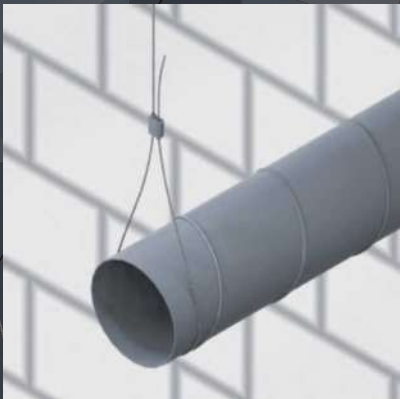
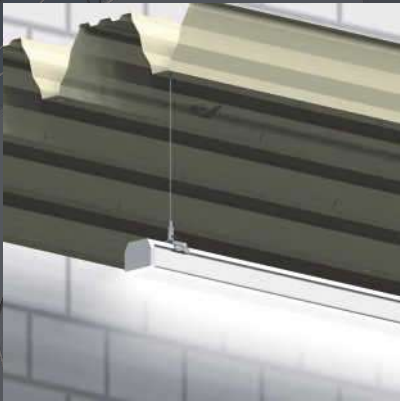





Professional wire suspensions



The **fSPRINT** installation system is the result of many years of practice, developed by experienced professionals.xperience in installation systems.




DECLARATION OF CONFORMITY
according to EN ISO/IEC 17050-1

1. No.	01/03/2025 EN
2. Name of the issuer	Pauer Trade s.r.o.
3. Address of the issuer	Praznov 39, 01701 Považská Bystrica, SK
4. Product designation	Wire suspension kit fSprint
5. Type	TG...
6. Application	For single-point suspensions and multi-point static loads
7. Conditions of use	according to the manufacturer's catalog

The above provision of the declaration is delivered in conformity with the following documents:

Certificate of Test, SGS
Ref. GZIN2103012193ML
deposited drawings

Považská Bystrica, 01.03.2025


Anton Pauer
Pauer Trade s.r.o.
company manager
(name and surname, position)

Issued on the basis of:
EN ISO/IEC 17050-1:2010
Conformity assessment
Supplier's declaration of conformity
Part 1: General requirements

Observe the safety instructions of the supplied product information and general safety regulations as you mount and use the product.

Translation of the Declaration of the provider No. 01/12/2021 issued on 23.08.2021.

Info@pauertrade.sk . Pauer Trade s.r.o . Praznov 39, 01701 Považská Bystrica .

Tested in ITB

Instytut Techniki Budowlanej (ITB) is the largest research institute operating in the field of construction in Poland, while being widely recognized in Europe and around the world.

Steel wire suspensions are safety confirmed by tests in laboratories run by the Building Research Institute.

Steel wires provide a minimum safety factor of 5 for the declared working load.

The "**fSPRINT**" wires are a safe and fast suspension system that provides several times the speed of work previously carried out using traditional methods. It is also a safe system that places significantly less strain on the roof compared to threaded precast. The difference is up to 90% less load in comparison to traditional slings without the use of cables.

References

"**fSPRINT**" wire suspensions are widely used in installations carried out both nationally and internationally. Steel wires are used in infrastructural, public and private facilities.



Flexible operation

Thanks to our extensive machinery, we are also able to realise non-standard solutions.



MAKE YOUR WORK EASIER AND FASTER



EASY TO INSTALL AND TRANSPORT

Wire rope is easier to transport and install in difficult terrain as it can be coiled and unwound as required.



STRETCHABILITY AND DYNAMIC LOAD

Wire rope can withstand high dynamic loads and is more resistant to tension. It is also less susceptible to fatigue in contrast to threaded rods.



LESS WEIGHT

Steel wires are lighter than threaded rods, leading to a reduction in the overall weight of the structure and lower transport and installation costs.



EASY INSTALLATION IN HARD-TO-REACH PLACES

Steel wires can be more easily guided through hard-to-reach areas or in complex structural configurations.



ELASTICITY AND FLEXIBILITY

The steel wire is flexible and can be easily bent and can be formed in different directions, making it ideal for in installation applications.



AESTHETICS AND MODERN DESIGN

Steel wires can be used in architecture to create modern and aesthetically pleasing structures such as balustrades, façades or decorative elements. Their slender appearance contributes to the elegant finish of the design.



EASE OF ADJUSTMENT AND TENSIONING

Steel wires can be easily tensioned using clamps which allows precise tension adjustment in structural systems. Threaded rods, although also adjustable, do not offer the same flexibility in tension adjustment.





Specification:

The full range is made up of prefabricated lengths of steel wire from 1 to 10 metres, including the 4S device lock, with a safe working load (SWL):

- 25 kg
- 55 kg
- 85 kg
- 115 kg

Other lengths available on request.

Applications:

- Cable trays
- Ducts and conduits for ventilation
- Lighting channels and tracks
- Luminaires
- Radiant heaters



Type	Length m	SWL kg	Min. pack pcs
LG15-1M	1	25	10
LG15-2M	2	25	10
LG15-3M	3	25	10
LG15-4M	4	25	10
LG15-5M	5	25	10
LG15-6M	6	25	10
LG15-7M	7	25	10
LG15-8M	8	25	10
LG15-9M	9	25	10
LG15-10M	10	25	10
LG20-1M	1	55	10
LG20-2M	2	55	10
LG20-3M	3	55	10
LG20-4M	4	55	10
LG20-5M	5	55	10
LG20-6M	6	55	10
LG20-7M	7	55	10
LG20-8M	8	55	10
LG20-9M	9	55	10
LG20-10M	10	55	10
LG25-1M	1	85	10
LG25-2M	2	85	10
LG25-3M	3	85	10
LG25-4M	4	85	10
LG25-5M	5	85	10
LG25-10M	10	85	10
LG30-1M	1	115	10
LG30-2M	2	115	10
LG30-3M	3	115	10
LG30-4M	4	115	10
LG30-5M	5	115	10
LG30-10M	10	115	10

Available in painted or stainless steel on request.

Examples of grippers:



fS standard terminal of the loop type. Universal.



CLM gripper for hanging luminaires.



STL8x20 through gripper. M8 thread, multifunctional.



LBO through clamp. HVAC installations.

Depending on our needs, we have a choice of different types of clamps, differing in functionality and load-bearing capacity. What they have in common is quick installation and infinite adjustment. All this means that the wires give us unlimited possibilities for fixing any suspension component. If you do not know which one to choose, please contact us and we will help you find the optimal solution.

with STL8x20 universal gripper

Specification:

The full range is made up of prefabricated lengths of steel wire from 1 to 10 metres, including the STL8x20 device lock, with a safe working load (SWL):

25 kg 55 kg 85 kg 110 kg

Other lengths available on request.



Applications:

- Cable trays
- Ducts and conduits for ventilation
- Lighting channels and tracks
- Luminaires
- Plenum boxes

Type	Length m	SWL kg	Min. pack pcs
LG15-1M-STL	1	25	10
LG15-2M-STL	2	25	10
LG15-3M-STL	3	25	10
LG15-4M-STL	4	25	10
LG15-5M-STL	5	25	10
LG15-6M-STL	6	25	10
LG15-7M-STL	7	25	10
LG15-8M-STL	8	25	10
LG15-9M-STL	9	25	10
LG15-10M-STL	10	25	10
LG20-1M-STL	1	55	10
LG20-2M-STL	2	55	10
LG20-3M-STL	3	55	10
LG20-4M-STL	4	55	10
LG20-5M-STL	5	55	10
LG20-6M-STL	6	55	10
LG20-7M-STL	7	55	10
LG20-8M-STL	8	55	10
LG20-9M-STL	9	55	10
LG20-10M-STL	10	55	10
LG25-1M-STL	1	85	10
LG25-2M-STL	2	85	10
LG25-3M-STL	3	85	10
LG25-4M-STL	4	85	10
LG25-5M-STL	5	85	10
LG25-10M-STL	10	85	10
LG30-1M-STL	1	110	10
LG30-2M-STL	2	110	10
LG30-3M-STL	3	110	10
LG30-4M-STL	4	110	10
LG30-5M-STL	5	110	10
LG30-10M-STL	10	110	10

Available in painted or stainless steel on request.

Examples of grippers:



fS standard terminal of the loop type. Universal.



CLM gripper for hanging luminaires.



STL8x20 through gripper. M8 thread, multifunctional.



LBO through clamp. HVAC installations.

Depending on our needs, we have a choice of different types of clamps, differing in functionality and load-bearing capacity. What they have in common is quick installation and infinite adjustment. All this means that the wires give us unlimited possibilities for fixing any suspension component. If you do not know which one to choose, please contact us and we will help you find the optimal solution.



Specification:

The full range is made up of prefabricated lengths of steel wire from 1 to 10 metres with a safe working load (SWL):

25 kg 55 kg 85 kg 115 kg

Other lengths available on request.



Applications:

- Cable trays
- Ducts and conduits for ventilation
- Lighting channels and tracks
- Luminaires
- Radiant heaters

Type	Length m	SWL kg	Min. pack pcs
L15-1M	1	25	10
L15-2M	2	25	10
L15-3M	3	25	10
L15-4M	4	25	10
L15-5M	5	25	10
L15-6M	6	25	10
L15-7M	7	25	10
L15-8M	8	25	10
L15-9M	9	25	10
L15-10M	10	25	10
L20-1M	1	55	10
L20-2M	2	55	10
L20-3M	3	55	10
L20-4M	4	55	10
L20-5M	5	55	10
L20-6M	6	55	10
L20-7M	7	55	10
L20-8M	8	55	10
L20-9M	9	55	10
L20-10M	10	55	10
L25-1M	1	85	10
L25-2M	2	85	10
L25-3M	3	85	10
L25-4M	4	85	10
L25-5M	5	85	10
L25-10M	10	85	10
L30-1M	1	115	10
L30-2M	2	115	10
L30-3M	3	115	10
L30-4M	4	115	10
L30-5M	5	115	10
L30-10M	10	115	10

Available in painted or stainless steel on request.

Examples of grippers:



FS standard terminal of the loop type. Universal.



CLM gripper for hanging luminaires.



STL8x20 through gripper. M8 thread, multifunctional.



LBO through clamp. HVAC installations.

Depending on our needs, we have a choice of different types of clamps, differing in functionality and load-bearing capacity. What they have in common is quick installation and infinite adjustment. All this means that the wires give us unlimited possibilities for fixing any suspension component. If you do not know which one to choose, please contact us and we will help you find the optimal solution.

Specification:

The full range is made up of prefabricated lengths of steel wire from 1 to 10 metres, 450 mm length arms, including the 4S device lock, with a safe working load (SWL):

25 kg 55 kg 85 kg 115 kg

Other lengths available on request.

Applications:

- Cable trays
- Ducts and conduits for ventilation
- Lighting channels and tracks
- Luminaires
- Radiant heaters



Type	Length m	SWL kg	Min. pack pcs
TG15-1M	1	25	10
TG15-2M	2	25	10
TG15-3M	3	25	10
TG15-4M	4	25	10
TG15-5M	5	25	10
TG15-6M	6	25	10
TG15-7M	7	25	10
TG15-8M	8	25	10
TG15-9M	9	25	10
TG15-10M	10	25	10
TG20-1M	1	55	10
TG20-2M	2	55	10
TG20-3M	3	55	10
TG20-4M	4	55	10
TG20-5M	5	55	10
TG20-6M	6	55	10
TG20-7M	7	55	10
TG20-8M	8	55	10
TG20-9M	9	55	10
TG20-10M	10	55	10
TG25-1M	1	85	10
TG25-2M	2	85	10
TG25-3M	3	85	10
TG25-4M	4	85	10
TG25-5M	5	85	10
TG25-10M	10	85	10
TG30-1M	1	115	10
TG30-2M	2	115	10
TG30-3M	3	115	10
TG30-4M	4	115	10
TG30-5M	5	115	10
TG30-10M	10	115	10

Available in painted or stainless steel on request.

Examples of grippers:



fS standard terminal of the loop type. Universal.



CLM gripper for hanging luminaires.



STL8x20 through gripper. M8 thread, multifunctional.



LBO through clamp. HVAC installations.

Depending on our needs, we have a choice of different types of clamps, differing in functionality and load-bearing capacity. What they have in common is quick installation and infinite adjustment. All this means that the wires give us unlimited possibilities for fixing any suspension component. If you do not know which one to choose, please contact us and we will help you find the optimal solution.



Specification:

The full range is made up of prefabricated lengths of steel wire from 1 to 10 metres, including the STL8x20 device lock, with a safe working load (SWL):

25 kg 55 kg 85 kg 110 kg

Other lengths available on request.

Applications:

- Cable trays
- Ducts and conduits for ventilation
- Lighting channels and tracks
- Luminaires
- Plenum boxes



Type	Length m	SWL kg	Min. pack pcs
TG15-1M-STL	1	25	10
TG15-2M-STL	2	25	10
TG15-3M-STL	3	25	10
TG15-4M-STL	4	25	10
TG15-5M-STL	5	25	10
TG15-6M-STL	6	25	10
TG15-7M-STL	7	25	10
TG15-8M-STL	8	25	10
TG15-9M-STL	9	25	10
TG15-10M-STL	10	25	10
<hr/>			
TG20-1M-STL	1	55	10
TG20-2M-STL	2	55	10
TG20-3M-STL	3	55	10
TG20-4M-STL	4	55	10
TG20-5M-STL	5	55	10
TG20-6M-STL	6	55	10
TG20-7M-STL	7	55	10
TG20-8M-STL	8	55	10
TG20-9M-STL	9	55	10
TG20-10M-STL	10	55	10
<hr/>			
TG25-1M-STL	1	85	10
TG25-2M-STL	2	85	10
TG25-3M-STL	3	85	10
TG25-4M-STL	4	85	10
TG25-5M-STL	5	85	10
TG25-10M-STL	10	85	10
<hr/>			
TG30-1M-STL	1	110	10
TG30-2M-STL	2	110	10
TG30-3M-STL	3	110	10
TG30-4M-STL	4	110	10
TG30-5M-STL	5	110	10
TG30-10M-STL	10	110	10

Dostępne na życzenie w wersji malowanej lub ze stali nierdzewnej.

Examples of grippers:



FS standard terminal of the loop type. Universal.



CLM gripper for hanging luminaires.



STL8x20 through gripper. M8 thread, multifunctional.



LBO through clamp. HVAC installations.

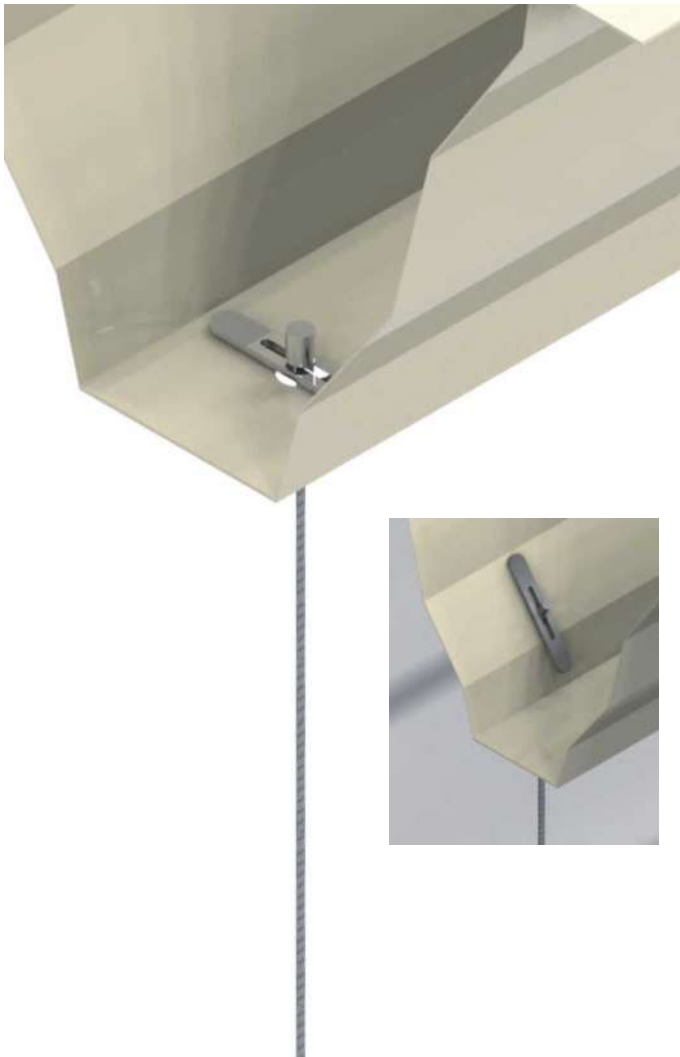
Depending on our needs, we have a choice of different types of clamps, differing in functionality and load-bearing capacity. What they have in common is quick installation and infinite adjustment. All this means that the wires give us unlimited possibilities for fixing any suspension component. If you do not know which one to choose, please contact us and we will help you find the optimal solution.

Specification:

The full range is made up of prefabricated lengths of steel wire from 1 to 10 metres with a safe working load (SWL):

25 kg 55 kg 85 kg 115 kg

Other lengths available on request.



Applications:

- Cable trays
- Ducts and conduits for ventilation
- Lighting channels and tracks
- Luminaires
- Radiant heaters

Type	Length m	SWL kg	Min. pack pcs
T15-1M	1	25	10
T15-2M	2	25	10
T15-3M	3	25	10
T15-4M	4	25	10
T15-5M	5	25	10
T15-6M	6	25	10
T15-7M	7	25	10
T15-8M	8	25	10
T15-9M	9	25	10
T15-10M	10	25	10
T20-1M	1	55	10
T20-2M	2	55	10
T20-3M	3	55	10
T20-4M	4	55	10
T20-5M	5	55	10
T20-6M	6	55	10
T20-7M	7	55	10
T20-8M	8	55	10
T20-9M	9	55	10
T20-10M	10	55	10
T25-1M	1	85	10
T25-2M	2	85	10
T25-3M	3	85	10
T25-4M	4	85	10
T25-5M	5	85	10
T25-10M	10	85	10
T30-1M	1	115	10
T30-2M	2	115	10
T30-3M	3	115	10
T30-4M	4	115	10
T30-5M	5	115	10
T30-10M	10	115	10

Available in painted or stainless steel on request.

Examples of grippers:



FS standard terminal of the loop type. Universal.



CLM gripper for hanging luminaires.



STL8x20 through gripper. M8 thread, multifunctional.



LBO through clamp. HVAC installations.

Depending on our needs, we have a choice of different types of clamps, differing in functionality and load-bearing capacity. What they have in common is quick installation and infinite adjustment. All this means that the wires give us unlimited possibilities for fixing any suspension component. If you do not know which one to choose, please contact us and we will help you find the optimal solution.

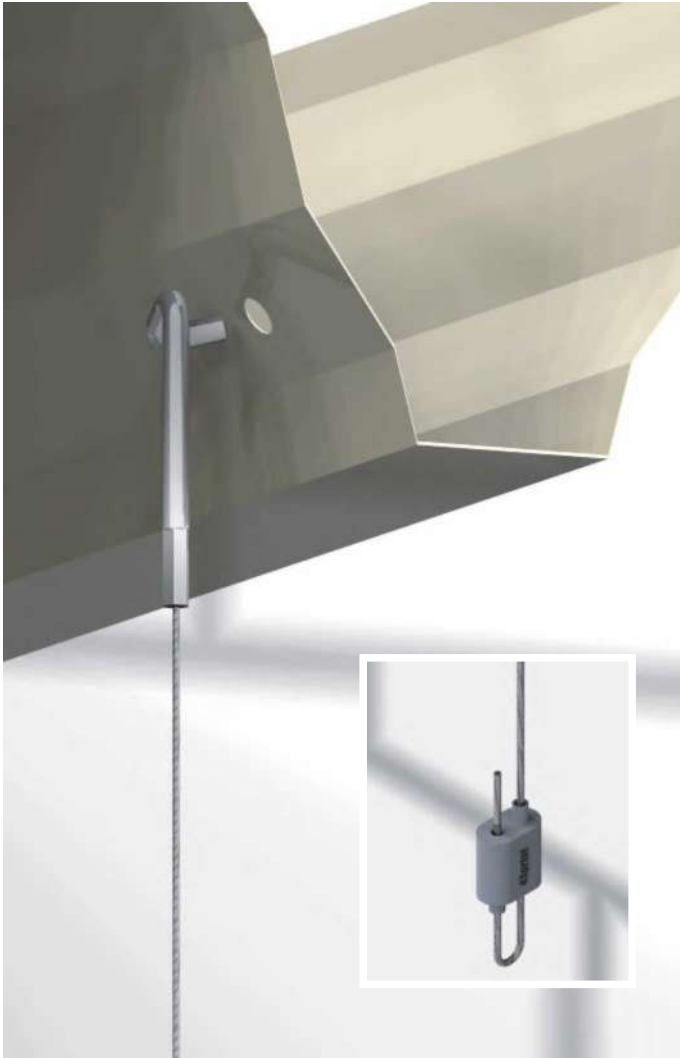


Specification:

The full range is made up of prefabricated lengths of steel wire from 1 to 10 metres, including the STL8x20 device lock, with a safe working load (SWL):

25 kg 55 kg 85 kg 115 kg

Other lengths available on request.



Applications:

- Cable trays
- Ducts and conduits for ventilation
- Lighting channels and tracks
- Luminaires
- Radiant heaters

Type	Length m	SWL kg	Min. pack pcs
NG15-1M	1	25	10
NG15-2M	2	25	10
NG15-3M	3	25	10
NG15-4M	4	25	10
NG15-5M	5	25	10
NG15-6M	6	25	10
NG15-7M	7	25	10
NG15-8M	8	25	10
NG15-9M	9	25	10
NG15-10M	10	25	10
NG20-1M	1	55	10
NG20-2M	2	55	10
NG20-3M	3	55	10
NG20-4M	4	55	10
NG20-5M	5	55	10
NG20-6M	6	55	10
NG20-7M	7	55	10
NG20-8M	8	55	10
NG20-9M	9	55	10
NG20-10M	10	55	10
NG25-1M	1	85	10
NG25-2M	2	85	10
NG25-3M	3	85	10
NG25-4M	4	85	10
NG25-5M	5	85	10
NG25-10M	10	85	10
NG30-1M	1	115	10
NG30-2M	2	115	10
NG30-3M	3	115	10
NG30-4M	4	115	10
NG30-5M	5	115	10
NG30-10M	10	115	10

Available in painted or stainless steel on request.

Examples of grippers:



fS standard terminal of the loop type. Universal.



CLM gripper for hanging luminaires.



STL8x20 through gripper. M8 thread, multifunctional.



LBO through clamp. HVAC installations.

Depending on our needs, we have a choice of different types of clamps, differing in functionality and load-bearing capacity. What they have in common is quick installation and infinite adjustment. All this means that the wires give us unlimited possibilities for fixing any suspension component. If you do not know which one to choose, please contact us and we will help you find the optimal solution.

Specification:

The full range is made up of prefabricated lengths of steel wire from 1 to 10 metres, including the STL8x20 device lock, with a safe working load (SWL):

25 kg 55 kg 85 kg 110 kg

Other lengths available on request.



Applications:

- Cable trays
- Ducts and conduits for ventilation
- Lighting channels and tracks
- Luminaires
- Plenum boxes

Type	Length m	SWL kg	Min. pack pcs
NG15-1M-STL	1	25	10
NG15-2M-STL	2	25	10
NG15-3M-STL	3	25	10
NG15-4M-STL	4	25	10
NG15-5M-STL	5	25	10
NG15-6M-STL	6	25	10
NG15-7M-STL	7	25	10
NG15-8M-STL	8	25	10
NG15-9M-STL	9	25	10
NG15-10M-STL	10	25	10
NG20-1M-STL	1	55	10
NG20-2M-STL	2	55	10
NG20-3M-STL	3	55	10
NG20-4M-STL	4	55	10
NG20-5M-STL	5	55	10
NG20-6M-STL	6	55	10
NG20-7M-STL	7	55	10
NG20-8M-STL	8	55	10
NG20-9M-STL	9	55	10
NG20-10M-STL	10	55	10
NG25-1M-STL	1	85	10
NG25-2M-STL	2	85	10
NG25-3M-STL	3	85	10
NG25-4M-STL	4	85	10
NG25-5M-STL	5	85	10
NG25-10M-STL	10	85	10
NG30-1M-STL	1	110	10
NG30-2M-STL	2	110	10
NG30-3M-STL	3	110	10
NG30-4M-STL	4	110	10
NG30-5M-STL	5	110	10
NG30-10M-STL	10	110	10

Available in painted or stainless steel on request.

Examples of grippers:



fS standard terminal of the loop type. Universal.



CLM gripper for hanging luminaires.



STL8x20 through gripper. M8 thread, multifunctional.



LBO through clamp. HVAC installations.

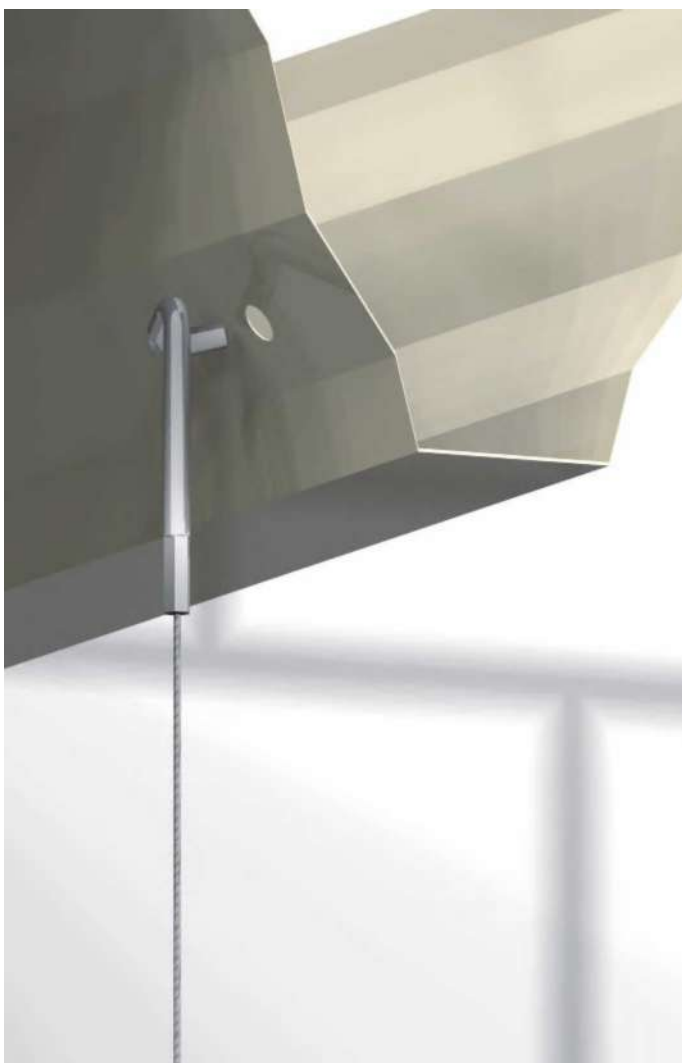
Depending on our needs, we have a choice of different types of clamps, differing in functionality and load-bearing capacity. What they have in common is quick installation and infinite adjustment. All this means that the wires give us unlimited possibilities for fixing any suspension component. If you do not know which one to choose, please contact us and we will help you find the optimal solution.

Specification:

The full range is made up of prefabricated lengths of steel wire from 1 to 10 metres with a safe working load (SWL):

25 kg 55 kg 85 kg 115 kg

Other lengths available on request.



Applications:

- Cable trays
- Ducts and conduits for ventilation
- Lighting channels and tracks
- Luminaires
- Radiant heaters

Type	Length m	SWL kg	Min. pack pcs
N15-1M	1	25	10
N15-2M	2	25	10
N15-3M	3	25	10
N15-4M	4	25	10
N15-5M	5	25	10
N15-6M	6	25	10
N15-7M	7	25	10
N15-8M	8	25	10
N15-9M	9	25	10
N15-10M	10	25	10
N20-1M	1	55	10
N20-2M	2	55	10
N20-3M	3	55	10
N20-4M	4	55	10
N20-5M	5	55	10
N20-6M	6	55	10
N20-7M	7	55	10
N20-8M	8	55	10
N20-9M	9	55	10
N20-10M	10	55	10
N25-1M	1	85	10
N25-2M	2	85	10
N25-3M	3	85	10
N25-4M	4	85	10
N25-5M	5	85	10
N25-10M	10	85	10
N30-1M	1	115	10
N30-2M	2	115	10
N30-3M	3	115	10
N30-4M	4	115	10
N30-5M	5	115	10
N30-10M	10	115	10

Dostępne na życzenie w wersji malowanej lub ze stali nierdzewnej.

Examples of grippers:



FS standard terminal of the loop type. Universal.



CLM gripper for hanging luminaires.



STL8x20 through gripper. M8 thread, multifunctional.



LBO through clamp. HVAC installations.

Depending on our needs, we have a choice of different types of clamps, differing in functionality and load-bearing capacity. What they have in common is quick installation and infinite adjustment. All this means that the wires give us unlimited possibilities for fixing any suspension component. If you do not know which one to choose, please contact us and we will help you find the optimal solution.

Specification:

The full range is made up of prefabricated lengths of steel wire from 1 to 10 metres, ended with thread M6 or M8, including the 4S device lock, with a safe working load (SWL):

25 kg 55 kg 85 kg 115 kg

Other lengths available on request.

Applications:

- Cable trays
- Ducts and conduits for ventilation
- Lighting channels and tracks
- Luminaires
- Radiant heaters



Type	Thread	Length m	SWL kg	Min. pack pcs
ETG15-1M	M6	1	25	10
ETG15-2M	M6	2	25	10
ETG15-3M	M6	3	25	10
ETG15-4M	M6	4	25	10
ETG15-5M	M6	5	25	10
ETG15-6M	M6	6	25	10
ETG15-7M	M6	7	25	10
ETG15-8M	M6	8	25	10
ETG15-9M	M6	9	25	10
ETG15-10M	M6	10	25	10
ETG20-1M	M8	1	55	10
ETG20-2M	M8	2	55	10
ETG20-3M	M8	3	55	10
ETG20-4M	M8	4	55	10
ETG20-5M	M8	5	55	10
ETG20-6M	M8	6	55	10
ETG20-7M	M8	7	55	10
ETG20-8M	M8	8	55	10
ETG20-9M	M8	9	55	10
ETG20-10M	M8	10	55	10
ETG25-1M	M8	1	85	10
ETG25-2M	M8	2	85	10
ETG25-3M	M8	3	85	10
ETG25-4M	M8	4	85	10
ETG25-5M	M8	5	85	10
ETG25-10M	M8	10	85	10
ETG30-1M	M8	1	115	10
ETG30-2M	M8	2	115	10
ETG30-3M	M8	3	115	10
ETG30-4M	M8	4	115	10
ETG30-5M	M8	5	115	10
ETG30-10M	M8	10	115	10

Available in painted or stainless steel on request.

Examples of grippers:



fS standard terminal of the loop type. Universal.



CLM gripper for hanging luminaires.



STL8x20 through gripper. M8 thread, multifunctional.



LBO through clamp. HVAC installations.

Depending on our needs, we have a choice of different types of clamps, differing in functionality and load-bearing capacity. What they have in common is quick installation and infinite adjustment. All this means that the wires give us unlimited possibilities for fixing any suspension component. If you do not know which one to choose, please contact us and we will help you find the optimal solution.

Specification:

The full range is made up of prefabricated lengths of steel wire from 1 to 10 metres, ended with thread M6 or M8, including the STL8x20 device lock, with a safe working load (SWL):

25 kg 55 kg 85 kg 110 kg

Other lengths available on request.



Applications:

- Cable trays
- Ducts and conduits for ventilation
- Lighting channels and tracks
- Luminaires
- Plenum boxes

Type	Thread	Length m	SWL kg	Min. pack pcs
ETG15-1M-STL	M6	1	25	10
ETG15-2M-STL	M6	2	25	10
ETG15-3M-STL	M6	3	25	10
ETG15-4M-STL	M6	4	25	10
ETG15-5M-STL	M6	5	25	10
ETG15-6M-STL	M6	6	25	10
ETG15-7M-STL	M6	7	25	10
ETG15-8M-STL	M6	8	25	10
ETG15-9M-STL	M6	9	25	10
ETG15-10M-STL	M6	10	25	10
ETG20-1M-STL	M8	1	55	10
ETG20-2M-STL	M8	2	55	10
ETG20-3M-STL	M8	3	55	10
ETG20-4M-STL	M8	4	55	10
ETG20-5M-STL	M8	5	55	10
ETG20-6M-STL	M8	6	55	10
ETG20-7M-STL	M8	7	55	10
ETG20-8M-STL	M8	8	55	10
ETG20-9M-STL	M8	9	55	10
ETG20-10M-STL	M8	10	55	10
ETG25-1M-STL	M8	1	85	10
ETG25-2M-STL	M8	2	85	10
ETG25-3M-STL	M8	3	85	10
ETG25-4M-STL	M8	4	85	10
ETG25-5M-STL	M8	5	85	10
ETG25-10M-STL	M8	10	85	10
ETG30-1M-STL	M8	1	110	10
ETG30-2M-STL	M8	2	110	10
ETG30-3M-STL	M8	3	110	10
ETG30-4M-STL	M8	4	110	10
ETG30-5M-STL	M8	5	110	10
ETG30-10M-STL	M8	10	110	10

Available in painted or stainless steel on request.

Examples of grippers:



fS standard terminal of the loop type. Universal.



CLM gripper for hanging luminaires.



STL8x20 through gripper. M8 thread, multifunctional.



LBO through clamp. HVAC installations.

Depending on our needs, we have a choice of different types of clamps, differing in functionality and load-bearing capacity. What they have in common is quick installation and infinite adjustment. All this means that the wires give us unlimited possibilities for fixing any suspension component. If you do not know which one to choose, please contact us and we will help you find the optimal solution.



Specification:

The full range is made up of prefabricated lengths of steel wire from 1 to 10 metres, ended with thread M6 or M8 with a safe working load (SWL):

- 25 kg
- 55 kg
- 85 kg
- 115 kg

Other lengths available on request.



Applications:

- Cable trays
- Ducts and conduits for ventilation
- Lighting channels and tracks
- Luminaires
- Radiant heaters

Type	Thread	Length m	SWL kg	Min. pack pcs
ET15-1M	M6	1	25	10
ET15-2M	M6	2	25	10
ET15-3M	M6	3	25	10
ET15-4M	M6	4	25	10
ET15-5M	M6	5	25	10
ET15-6M	M6	6	25	10
ET15-7M	M6	7	25	10
ET15-8M	M6	8	25	10
ET15-9M	M6	9	25	10
ET15-10M	M6	10	25	10
ET20-1M	M8	1	55	10
ET20-2M	M8	2	55	10
ET20-3M	M8	3	55	10
ET20-4M	M8	4	55	10
ET20-5M	M8	5	55	10
ET20-6M	M8	6	55	10
ET20-7M	M8	7	55	10
ET20-8M	M8	8	55	10
ET20-9M	M8	9	55	10
ET20-10M	M8	10	55	10
ET25-1M	M8	1	85	10
ET25-2M	M8	2	85	10
ET25-3M	M8	3	85	10
ET25-4M	M8	4	85	10
ET25-5M	M8	5	85	10
ET25-10M	M8	10	85	10
ET30-1M	M8	1	115	10
ET30-2M	M8	2	115	10
ET30-3M	M8	3	115	10
ET30-4M	M8	4	115	10
ET30-5M	M8	5	115	10
ET30-10M	M8	10	115	10

Available in painted or stainless steel on request.

Examples of grippers:



fS standard terminal of the loop type. Universal.



CLM gripper for hanging luminaires.



STL8x20 through gripper. M8 thread, multifunctional.



LBO through clamp. HVAC installations.

Depending on our needs, we have a choice of different types of clamps, differing in functionality and load-bearing capacity. What they have in common is quick installation and infinite adjustment. All this means that the wires give us unlimited possibilities for fixing any suspension component. If you do not know which one to choose, please contact us and we will help you find the optimal solution.

Specification:

The full range is made up of prefabricated lengths of steel wire from 1 to 10 metres, including the 4S device lock, with a safe working load (SWL):

25 kg 55 kg 85 kg 115 kg

Other lengths available on request.



Applications:

- Cable trays
- Ducts and conduits for ventilation
- Lighting channels and tracks
- Luminaires
- Radiant heaters

Type	Length m	SWL kg	Min. pack pcs
KLG15-1M	1	25	10
KLG15-2M	2	25	10
KLG15-3M	3	25	10
KLG15-4M	4	25	10
KLG15-5M	5	25	10
KLG15-6M	6	25	10
KLG15-7M	7	25	10
KLG15-8M	8	25	10
KLG15-9M	9	25	10
KLG15-10M	10	25	10
<hr/>			
KLG20-1M	1	55	10
KLG20-2M	2	55	10
KLG20-3M	3	55	10
KLG20-4M	4	55	10
KLG20-5M	5	55	10
KLG20-6M	6	55	10
KLG20-7M	7	55	10
KLG20-8M	8	55	10
KLG20-9M	9	55	10
KLG20-10M	10	55	10
<hr/>			
KLG25-1M	1	85	10
KLG25-2M	2	85	10
KLG25-3M	3	85	10
KLG25-4M	4	85	10
KLG25-5M	5	85	10
KLG25-10M	10	85	10
<hr/>			
KLG30-1M	1	115	10
KLG30-2M	2	115	10
KLG30-3M	3	115	10
KLG30-4M	4	115	10
KLG30-5M	5	115	10
KLG30-10M	10	115	10

Available in painted or stainless steel on request.

Examples of grippers:



fS standard terminal of the loop type. Universal.



CLM gripper for hanging luminaires.



STL8x20 through gripper. M8 thread, multifunctional.



LBO through clamp. HVAC installations.

Depending on our needs, we have a choice of different types of clamps, differing in functionality and load-bearing capacity. What they have in common is quick installation and infinite adjustment. All this means that the wires give us unlimited possibilities for fixing any suspension component. If you do not know which one to choose, please contact us and we will help you find the optimal solution.



Specification:

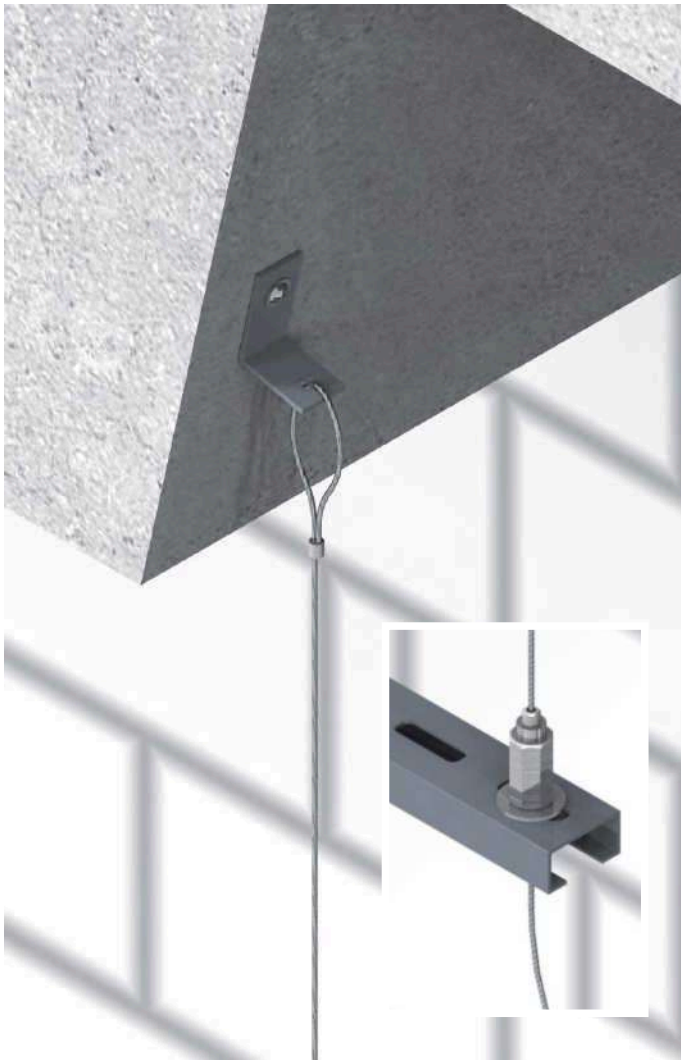
The full range is made up of prefabricated lengths of steel wire from 1 to 10 metres, including the STL8x20 device lock, with a safe working load (SWL):

25 kg 55 kg 85 kg 115 kg

Other lengths available on request.

Applications:

- Cable trays
- Ducts and conduits for ventilation
- Lighting channels and tracks
- Luminaires
- Plenum boxes



Type	Length m	SWL kg	Min. pack pcs
KLG15-1M-STL	1	25	10
KLG15-2M-STL	2	25	10
KLG15-3M-STL	3	25	10
KLG15-4M-STL	4	25	10
KLG15-5M-STL	5	25	10
KLG15-6M-STL	6	25	10
KLG15-7M-STL	7	25	10
KLG15-8M-STL	8	25	10
KLG15-9M-STL	9	25	10
KLG15-10M-STL	10	25	10
<hr/>			
KLG20-1M-STL	1	55	10
KLG20-2M-STL	2	55	10
KLG20-3M-STL	3	55	10
KLG20-4M-STL	4	55	10
KLG20-5M-STL	5	55	10
KLG20-6M-STL	6	55	10
KLG20-7M-STL	7	55	10
KLG20-8M-STL	8	55	10
KLG20-9M-STL	9	55	10
KLG20-10M-STL	10	55	10
<hr/>			
KLG25-1M-STL	1	85	10
KLG25-2M-STL	2	85	10
KLG25-3M-STL	3	85	10
KLG25-4M-STL	4	85	10
KLG25-5M-STL	5	85	10
KLG25-10M-STL	10	85	10
<hr/>			
KLG30-1M-STL	1	115	10
KLG30-2M-STL	2	115	10
KLG30-3M-STL	3	115	10
KLG30-4M-STL	4	115	10
KLG30-5M-STL	5	115	10
KLG30-10M-STL	10	115	10

Available in painted or stainless steel on request.

Examples of grippers:



fS standard terminal of the loop type. Universal.



CLM gripper for hanging luminaires.



STL8x20 through gripper. M8 thread, multifunctional.



LBO through clamp. HVAC installations.

Depending on our needs, we have a choice of different types of clamps, differing in functionality and load-bearing capacity. What they have in common is quick installation and infinite adjustment. All this means that the wires give us unlimited possibilities for fixing any suspension component. If you do not know which one to choose, please contact us and we will help you find the optimal solution.



Specification:

The full range is made up of prefabricated lengths of steel wire from 1 to 10 metres with a safe working load (SWL):

- 25 kg
- 55 kg
- 85 kg
- 115 kg

Other lengths available on request.

Applications:

- Cable trays
- Ducts and conduits for ventilation
- Lighting channels and tracks
- Luminaires
- Radiant heaters



Type	Length m	SWL kg	Min. pack pcs
KL15-1M	1	25	10
KL15-2M	2	25	10
KL15-3M	3	25	10
KL15-4M	4	25	10
KL15-5M	5	25	10
KL15-6M	6	25	10
KL15-7M	7	25	10
KL15-8M	8	25	10
KL15-9M	9	25	10
KL15-10M	10	25	10
KL20-1M	1	55	10
KL20-2M	2	55	10
KL20-3M	3	55	10
KL20-4M	4	55	10
KL20-5M	5	55	10
KL20-6M	6	55	10
KL20-7M	7	55	10
KL20-8M	8	55	10
KL20-9M	9	55	10
KL20-10M	10	55	10
KL25-1M	1	85	10
KL25-2M	2	85	10
KL25-3M	3	85	10
KL25-4M	4	85	10
KL25-5M	5	85	10
KL25-10M	10	85	10
KL30-1M	1	115	10
KL30-2M	2	115	10
KL30-3M	3	115	10
KL30-4M	4	115	10
KL30-5M	5	115	10
KL30-10M	10	115	10

Available in painted or stainless steel on request.

Examples of grippers:



fS standard terminal of the loop type. Universal.



CLM gripper for hanging luminaires.



STL8x20 through gripper. M8 thread, multifunctional.



LBO through clamp. HVAC installations.

Depending on our needs, we have a choice of different types of clamps, differing in functionality and load-bearing capacity. What they have in common is quick installation and infinite adjustment. All this means that the wires give us unlimited possibilities for fixing any suspension component. If you do not know which one to choose, please contact us and we will help you find the optimal solution.

Specification:

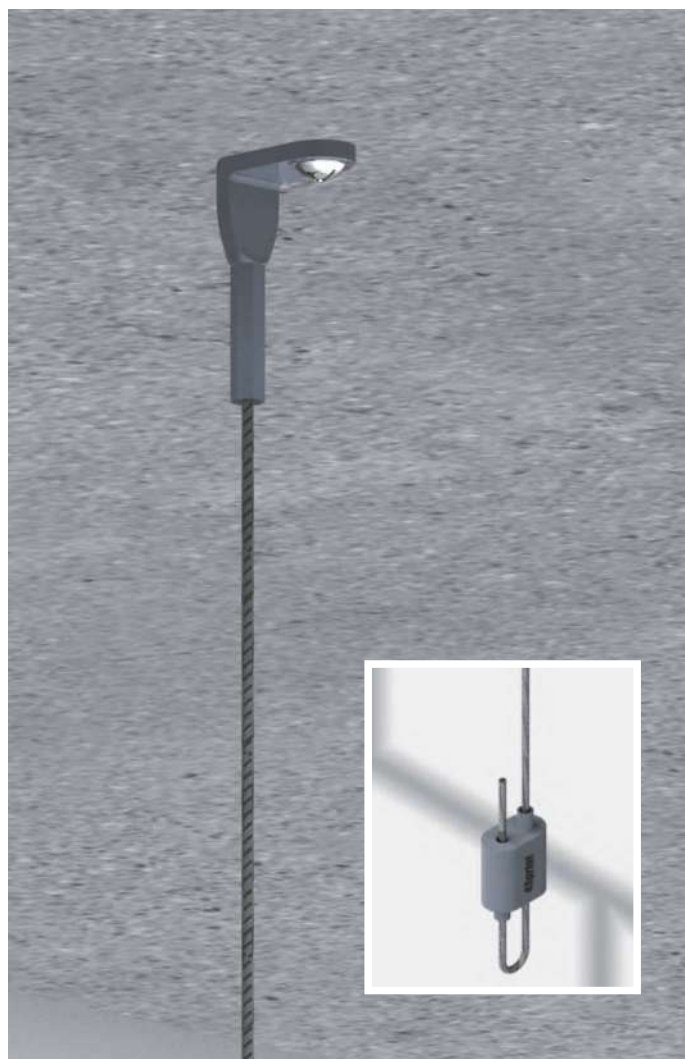
The full range is made up of prefabricated lengths of steel wire from 1 to 10 metres, including the 4S device lock, with a safe working load (SWL):

25 kg 55 kg 85 kg 115 kg

Other lengths available on request.

Applications:

- Cable trays
- Ducts and conduits for ventilation
- Lighting channels and tracks
- Luminaires
- Radiant heaters



Type	Length m	SWL kg	Min. pack pcs
NG15-1M-K90	1	25	10
NG15-2M-K90	2	25	10
NG15-3M-K90	3	25	10
NG15-4M-K90	4	25	10
NG15-5M-K90	5	25	10
NG15-6M-K90	6	25	10
NG15-7M-K90	7	25	10
NG15-8M-K90	8	25	10
NG15-9M-K90	9	25	10
NG15-10M-K90	10	25	10
NG20-1M-K90	1	55	10
NG20-2M-K90	2	55	10
NG20-3M-K90	3	55	10
NG20-4M-K90	4	55	10
NG20-5M-K90	5	55	10
NG20-6M-K90	6	55	10
NG20-7M-K90	7	55	10
NG20-8M-K90	8	55	10
NG20-9M-K90	9	55	10
NG20-10M-K90	10	55	10
NG25-1M-K90	1	85	10
NG25-2M-K90	2	85	10
NG25-3M-K90	3	85	10
NG25-4M-K90	4	85	10
NG25-5M-K90	5	85	10
NG25-10M-K90	10	85	10
NG30-1M-K90	1	115	10
NG30-2M-K90	2	115	10
NG30-3M-K90	3	115	10
NG30-4M-K90	4	115	10
NG30-5M-K90	5	115	10
NG30-10M-K90	10	115	10

Available in painted or stainless steel on request.

Examples of grippers:



fS standard terminal of the loop type. Universal.



CLM gripper for hanging luminaires.



STL8x20 through gripper. M8 thread, multifunctional.



LBO through clamp. HVAC installations.

Depending on our needs, we have a choice of different types of clamps, differing in functionality and load-bearing capacity. What they have in common is quick installation and infinite adjustment. All this means that the wires give us unlimited possibilities for fixing any suspension component. If you do not know which one to choose, please contact us and we will help you find the optimal solution.



Specification:

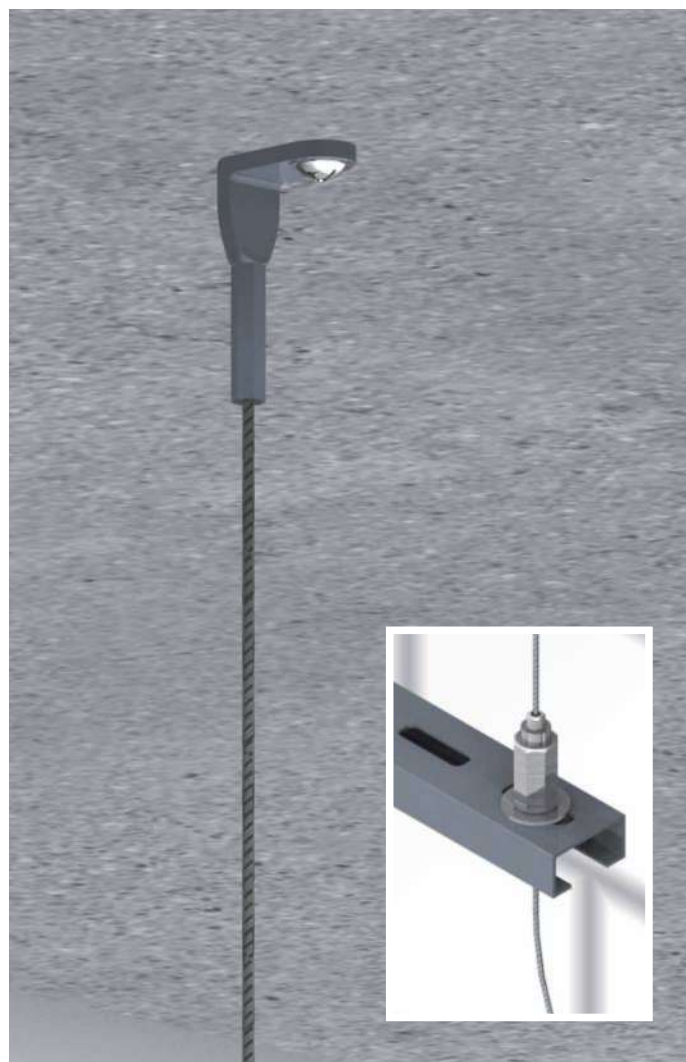
The full range is made up of prefabricated lengths of steel wire from 1 to 10 metres, including the STL8x20 device lock, with a safe working load (SWL):

25 kg 55 kg 85 kg 110 kg

Other lengths available on request.

Applications:

- Cable trays
- Ducts and conduits for ventilation
- Lighting channels and tracks
- Luminaires
- Plenum boxes



Type	Length m	SWL kg	Min. pack pcs
NG15-1M-STL-K90	1	25	10
NG15-2M-STL-K90	2	25	10
NG15-3M-STL-K90	3	25	10
NG15-4M-STL-K90	4	25	10
NG15-5M-STL-K90	5	25	10
NG15-6M-STL-K90	6	25	10
NG15-7M-STL-K90	7	25	10
NG15-8M-STL-K90	8	25	10
NG15-9M-STL-K90	9	25	10
NG15-10M-STL-K90	10	25	10
NG20-1M-STL-K90	1	55	10
NG20-2M-STL-K90	2	55	10
NG20-3M-STL-K90	3	55	10
NG20-4M-STL-K90	4	55	10
NG20-5M-STL-K90	5	55	10
NG20-6M-STL-K90	6	55	10
NG20-7M-STL-K90	7	55	10
NG20-8M-STL-K90	8	55	10
NG20-9M-STL-K90	9	55	10
NG20-10M-STL-K90	10	55	10
NG25-1M-STL-K90	1	85	10
NG25-2M-STL-K90	2	85	10
NG25-3M-STL-K90	3	85	10
NG25-4M-STL-K90	4	85	10
NG25-5M-STL-K90	5	85	10
NG25-10M-STL-K90	10	85	10
NG30-1M-STL-K90	1	110	10
NG30-2M-STL-K90	2	110	10
NG30-3M-STL-K90	3	110	10
NG30-4M-STL-K90	4	110	10
NG30-5M-STL-K90	5	110	10
NG30-10M-STL-K90	10	110	10

Available in painted or stainless steel on request.

Examples of grippers:



fS standard terminal of the loop type. Universal.



CLM gripper for hanging luminaires.



STL8x20 through gripper. M8 thread, multifunctional.



LBO through clamp. HVAC installations.

Depending on our needs, we have a choice of different types of clamps, differing in functionality and load-bearing capacity. What they have in common is quick installation and infinite adjustment. All this means that the wires give us unlimited possibilities for fixing any suspension component. If you do not know which one to choose, please contact us and we will help you find the optimal solution.



Specification:

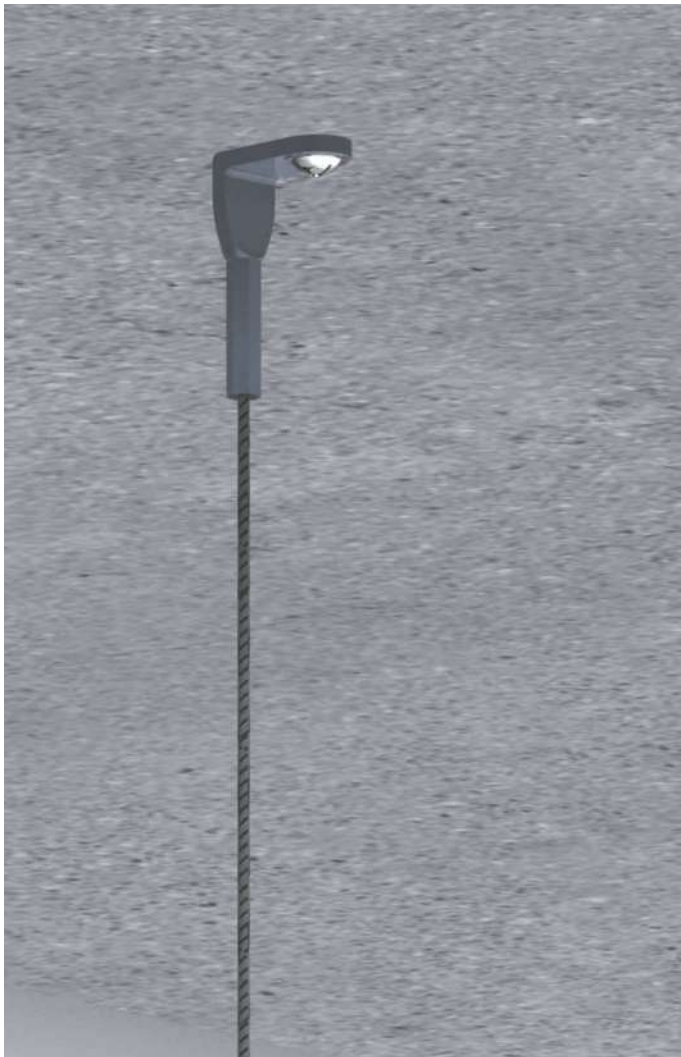
The full range is made up of prefabricated lengths of steel wire from 1 to 10 metres with a safe working load (SWL):

- 25 kg
- 55 kg
- 85 kg
- 110 kg

Other lengths available on request.

Applications:

- Cable trays
- Ducts and conduits for ventilation
- Lighting channels and tracks
- Luminaires
- Radiant heaters



Type	Length m	SWL kg	Min. pack pcs
N15-1M-K90	1	25	10
N15-2M-K90	2	25	10
N15-3M-K90	3	25	10
N15-4M-K90	4	25	10
N15-5M-K90	5	25	10
N15-6M-K90	6	25	10
N15-7M-K90	7	25	10
N15-8M-K90	8	25	10
N15-9M-K90	9	25	10
N15-10M-K90	10	25	10
<hr/>			
N20-1M-K90	1	55	10
N20-2M-K90	2	55	10
N20-3M-K90	3	55	10
N20-4M-K90	4	55	10
N20-5M-K90	5	55	10
N20-6M-K90	6	55	10
N20-7M-K90	7	55	10
N20-8M-K90	8	55	10
N20-9M-K90	9	55	10
N20-10M-K90	10	55	10
<hr/>			
N25-1M-K90	1	85	10
N25-2M-K90	2	85	10
N25-3M-K90	3	85	10
N25-4M-K90	4	85	10
N25-5M-K90	5	85	10
N25-10M-K90	10	85	10
<hr/>			
N30-1M-K90	1	110	10
N30-2M-K90	2	110	10
N30-3M-K90	3	110	10
N30-4M-K90	4	110	10
N30-5M-K90	5	110	10
N30-10M-K90	10	110	10

Available in painted or stainless steel on request.

Examples of grippers:



fS standard terminal of the loop type. Universal.



CLM gripper for hanging luminaires.



STL8x20 through gripper. M8 thread, multifunctional.



LBO through clamp. HVAC installations.

Depending on our needs, we have a choice of different types of clamps, differing in functionality and load-bearing capacity. What they have in common is quick installation and infinite adjustment. All this means that the wires give us unlimited possibilities for fixing any suspension component. If you do not know which one to choose, please contact us and we will help you find the optimal solution.

Specification:

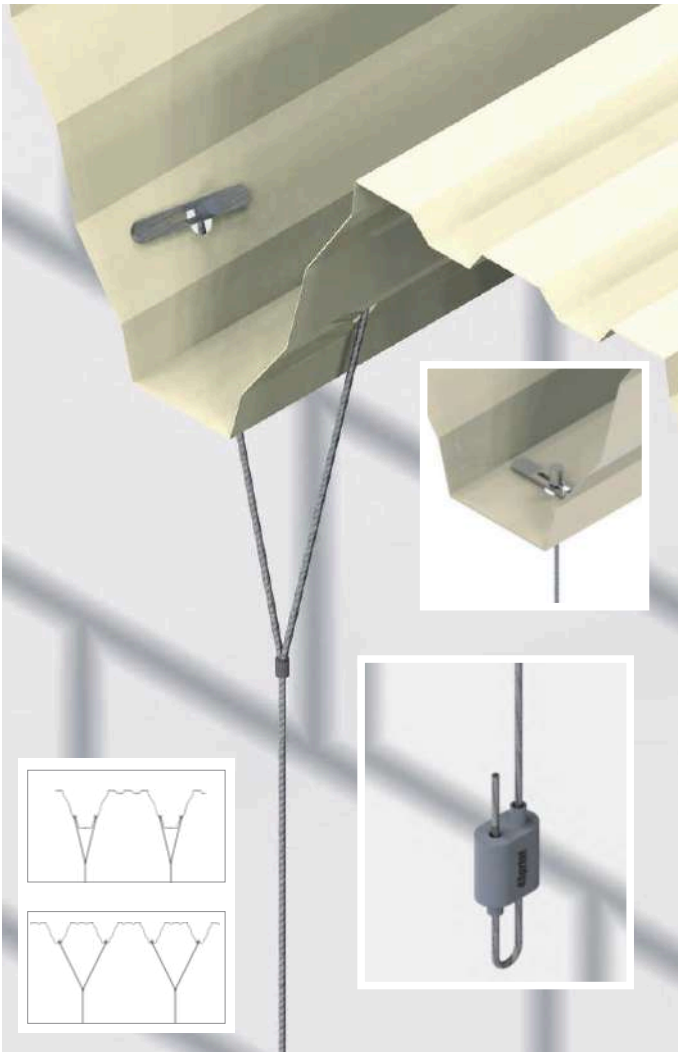
The full range is made up of prefabricated lengths of steel wire from 1 to 10 metres, 450 mm length arms, including the 4S device lock, with a safe working load (SWL):

25 kg 55 kg 85 kg 115 kg

Other lengths available on request.

Applications:

- Cable trays
- Ducts and conduits for ventilation
- Lighting channels and tracks
- Luminaires
- Radiant heaters



Type	Length m	SWL kg	Min. pack pcs
YTG15-1M-45	1	25	10
YTG15-2M-45	2	25	10
YTG15-3M-45	3	25	10
YTG15-4M-45	4	25	10
YTG15-5M-45	5	25	10
YTG15-6M-45	6	25	10
YTG15-7M-45	7	25	10
YTG15-8M-45	8	25	10
YTG15-9M-45	9	25	10
YTG15-10M-45	10	25	10
YTG20-1M-45	1	55	10
YTG20-2M-45	2	55	10
YTG20-3M-45	3	55	10
YTG20-4M-45	4	55	10
YTG20-5M-45	5	55	10
YTG20-6M-45	6	55	10
YTG20-7M-45	7	55	10
YTG20-8M-45	8	55	10
YTG20-9M-45	9	55	10
YTG20-10M-45	10	55	10
YTG25-1M-45	1	85	10
YTG25-2M-45	2	85	10
YTG25-3M-45	3	85	10
YTG25-4M-45	4	85	10
YTG25-5M-45	5	85	10
YTG25-10M-45	10	85	10
YTG30-1M-45	1	115	10
YTG30-2M-45	2	115	10
YTG30-3M-45	3	115	10
YTG30-4M-45	4	115	10
YTG30-5M-45	5	115	10
YTG30-10M-45	10	115	10

Available in painted or stainless steel on request.

Examples of grippers:



fS standard terminal of the loop type. Universal.



CLM gripper for hanging luminaires.



STL8x20 through gripper. M8 thread, multifunctional.



LBO through clamp. HVAC installations.

Depending on our needs, we have a choice of different types of clamps, differing in functionality and load-bearing capacity. What they have in common is quick installation and infinite adjustment. All this means that the wires give us unlimited possibilities for fixing any suspension component. If you do not know which one to choose, please contact us and we will help you find the optimal solution.

Specification:

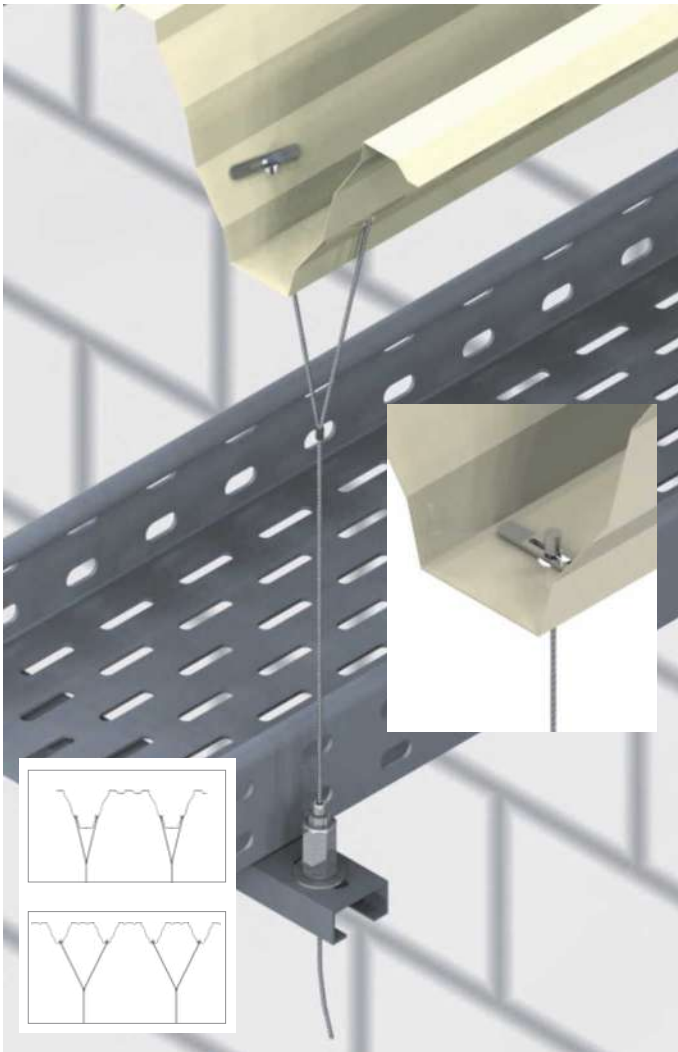
The full range is made up of prefabricated lengths of steel wire from 1 to 10 metres, 450 mm length arms, including the STL8x20 device lock, with a safe working load (SWL):

25 kg 55 kg 85 kg 110 kg

Other lengths available on request.

Applications:

- Cable trays
- Ducts and conduits for ventilation
- Lighting channels and tracks
- Luminaires
- Plenum boxes



Type	Length m	SWL kg	Min. pack pcs
YTG15-1M-45-STL	1	25	10
YTG15-2M-45-STL	2	25	10
YTG15-3M-45-STL	3	25	10
YTG15-4M-45-STL	4	25	10
YTG15-5M-45-STL	5	25	10
YTG15-6M-45-STL	6	25	10
YTG15-7M-45-STL	7	25	10
YTG15-8M-45-STL	8	25	10
YTG15-9M-45-STL	9	25	10
YTG15-10M-45-STL	10	25	10
YTG20-1M-45-STL	1	55	10
YTG20-2M-45-STL	2	55	10
YTG20-3M-45-STL	3	55	10
YTG20-4M-45-STL	4	55	10
YTG20-5M-45-STL	5	55	10
YTG20-6M-45-STL	6	55	10
YTG20-7M-45-STL	7	55	10
YTG20-8M-45-STL	8	55	10
YTG20-9M-45-STL	9	55	10
YTG20-10M-45-STL	10	55	10
YTG25-1M-45-STL	1	85	10
YTG25-2M-45-STL	2	85	10
YTG25-3M-45-STL	3	85	10
YTG25-4M-45-STL	4	85	10
YTG25-5M-45-STL	5	85	10
YTG25-10M-45-STL	10	85	10
YTG30-1M-45-STL	1	115	10
YTG30-2M-45-STL	2	115	10
YTG30-3M-45-STL	3	115	10
YTG30-4M-45-STL	4	115	10
YTG30-5M-45-STL	5	115	10
YTG30-10M-45-STL	10	115	10

Available in painted or stainless steel on request.

Examples of grippers:



fS standard terminal of the loop type. Universal.



CLM gripper for hanging luminaires.



STL8x20 through gripper. M8 thread, multifunctional.



LBO through clamp. HVAC installations.

Depending on our needs, we have a choice of different types of clamps, differing in functionality and load-bearing capacity. What they have in common is quick installation and infinite adjustment. All this means that the wires give us unlimited possibilities for fixing any suspension component. If you do not know which one to choose, please contact us and we will help you find the optimal solution.

Specification:

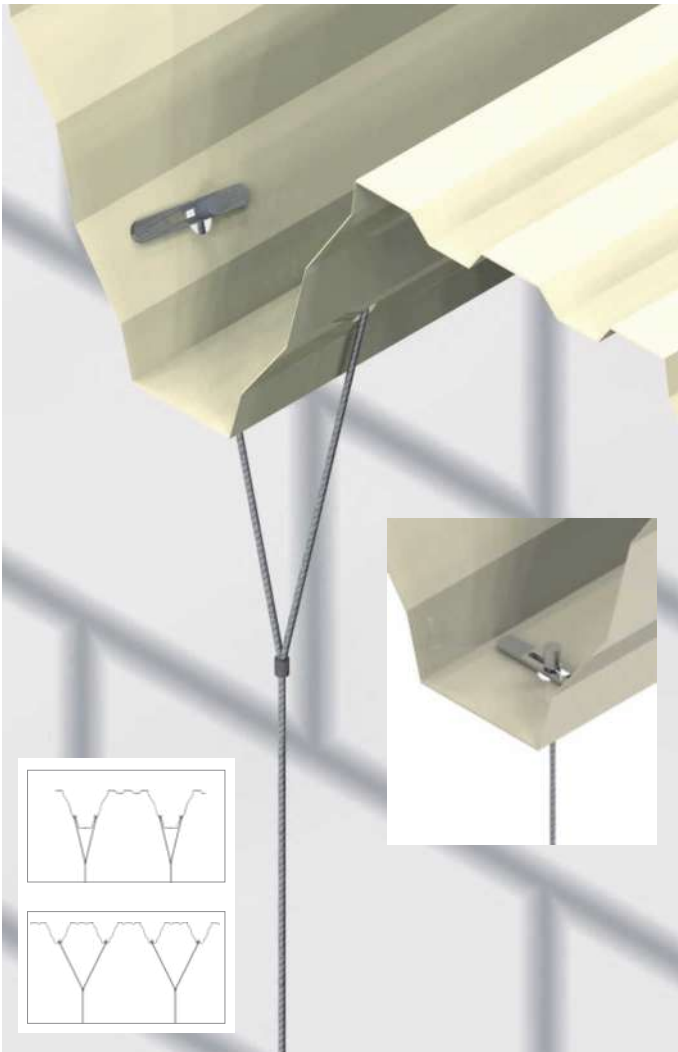
The full range is made up of prefabricated lengths of steel wire from 1 to 10 metres, 450 mm length arms, with a safe working load (SWL):

25 kg 55 kg 85 kg 115 kg

Other lengths available on request.

Applications:

- Cable trays
- Ducts and conduits for ventilation
- Lighting channels and tracks
- Luminaires
- Radiant heaters



Type	Length m	SWL kg	Min. pack pcs
YT15-1M	1	25	10
YT15-2M	2	25	10
YT15-3M	3	25	10
YT15-4M	4	25	10
YT15-5M	5	25	10
YT15-6M	6	25	10
YT15-7M	7	25	10
YT15-8M	8	25	10
YT15-9M	9	25	10
YT15-10M	10	25	10
YT20-1M	1	55	10
YT20-2M	2	55	10
YT20-3M	3	55	10
YT20-4M	4	55	10
YT20-5M	5	55	10
YT20-6M	6	55	10
YT20-7M	7	55	10
YT20-8M	8	55	10
YT20-9M	9	55	10
YT20-10M	10	55	10
YT25-1M	1	85	10
YT25-2M	2	85	10
YT25-3M	3	85	10
YT25-4M	4	85	10
YT25-5M	5	85	10
YT25-10M	10	85	10
YT30-1M	1	115	10
YT30-2M	2	115	10
YT30-3M	3	115	10
YT30-4M	4	115	10
YT30-5M	5	115	10
YT30-10M	10	115	10

Available in painted or stainless steel on request.

Examples of grippers:



fS standard terminal of the loop type. Universal.



CLM gripper for hanging luminaires.



STL8x20 through gripper. M8 thread, multifunctional.



LBO through clamp. HVAC installations.

Depending on our needs, we have a choice of different types of clamps, differing in functionality and load-bearing capacity. What they have in common is quick installation and infinite adjustment. All this means that the wires give us unlimited possibilities for fixing any suspension component. If you do not know which one to choose, please contact us and we will help you find the optimal solution.



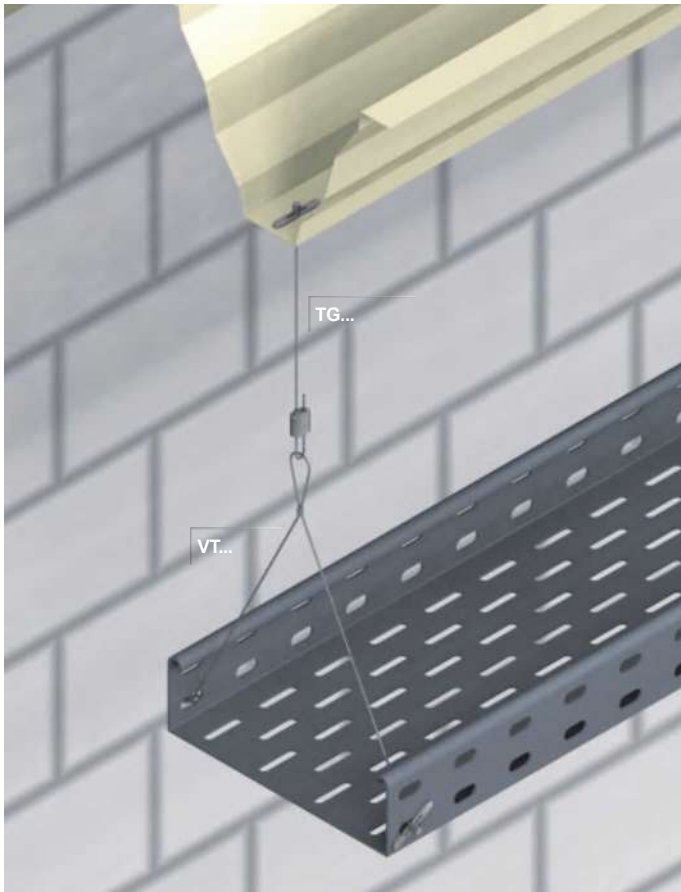
Specification:

VT-type steel wire for suspension of lighting and cable trays from 50 to 400 mm wide, with safe working load (SWL):

55 kg

Applications:

- Cable trays
- Luminaires



Type	For cable tray mm	Arm length mm	Min. pack pcs
VT50-250	50 - 250	300	10
VT300-450	300 - 400	460	10

The TG wire shown in the picture is not part of the kit. Please order the appropriate sling line depending on its length and type of substrate.

Available in painted or stainless steel on request.



Examples of grippers:



FS standard terminal of the loop type. Universal.



CLM gripper for hanging luminaires.



STL8x20 through gripper. M8 thread, multifunctional.



LBO through clamp. HVAC installations.

Depending on our needs, we have a choice of different types of clamps, differing in functionality and load-bearing capacity. What they have in common is quick installation and infinite adjustment. All this means that the wires give us unlimited possibilities for fixing any suspension component. If you do not know which one to choose, please contact us and we will help you find the optimal solution.

Complete suspension set with reinforced C-profile and wire rope set, with STL8x20 universal gripper

Specification:

Reinforced C-profile with an external dimension of 41 x 21 mm, made from 1.5 mm thick sheet metal. Slot 22 mm wide. Galvanised steel in accordance with EN 10346.

Supplied as complete components with STL8x20 clamps installed, ready for assembly. Steel wires with the chosen termination, included in the kit.

Pair of safety load lines (SWL):

- 50 kg
- 110 kg
- 170 kg
- 220 kg

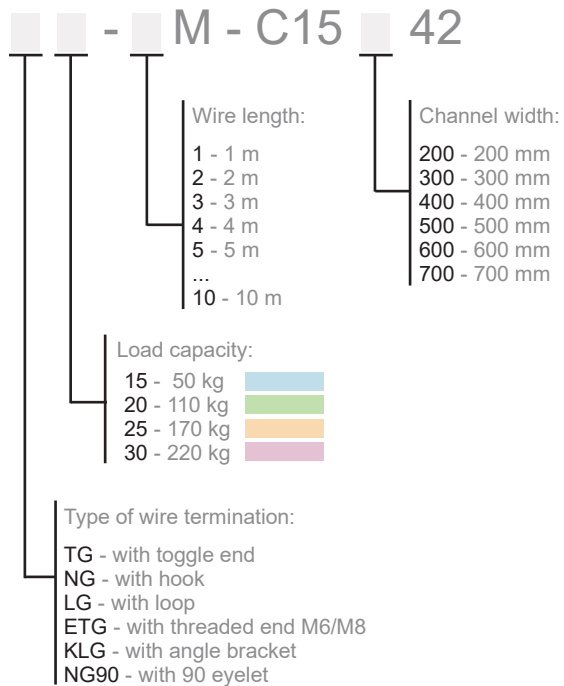
Other lengths available on request.



Applications:

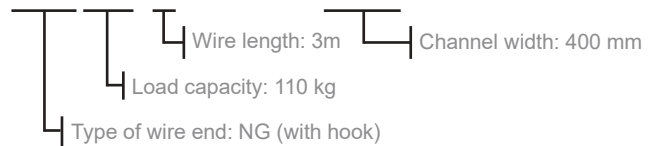
- Cable trays
- Ducts and conduits for ventilation
- Lighting channels and tracks
- Luminaires
- Plenum boxes

Order type:



Example:

NG20-3M-C1540042



Available in painted or stainless steel on request.

Examples of grippers:



fS standard terminal of the loop type. Universal.



CLM gripper for hanging luminaires.



STL8x20 through gripper. M8 thread, multifunctional.



LBO through clamp. HVAC installations.

Depending on our needs, we have a choice of different types of clamps, differing in functionality and load-bearing capacity. What they have in common is quick installation and infinite adjustment. All this means that the wires give us unlimited possibilities for fixing any suspension component. If you do not know which one to choose, please contact us and we will help you find the optimal solution.

Reinforced C-profile with STL8x20 universal grippers

Specification:

Reinforced C-profile with an external dimension of 41 x 21 mm, made from 1.5 mm thick sheet metal. Slot 22 mm wide. Galvanised steel in accordance with EN 10346.

Supplied as complete components with STL8x20 clamps installed, ready for assembly.

Applications:

- Cable trays
- Ducts and conduits for ventilation



Type	Length mm	For cable tray mm	Min. pack pcs
C15x200P42	200	100	10
C15x300P42	300	200	10
C15x400P42	400	300	10
C15x500P42	500	400	10
C15x600P42	600	500	10
C15x700P42	700	600	10

Other lengths available on request.

Examples of applications:



Depending on our needs, we have a choice of different types of clamps, differing in functionality and load-bearing capacity. What they have in common is quick installation and infinite adjustment. All this means that the wires give us unlimited possibilities for fixing any suspension component. If you do not know which one to choose, please contact us and we will help you find the optimal solution.

Extension wire system for suspension of installations

Specification:

A suspension wire system for use in areas where it is not possible to use standard suspension directly to the roof. By using a suspension wire between fixed structural points such as a beam, I-beam or concrete wall, we can suspend the necessary installations quickly and easily.

Applications:

- Cable trays
- Ducts and conduits for ventilation
- Lighting channels and tracks
- Luminaires



Type	Load capacity kg	Maximum line length	Min. pack pcs
KL600	100	100 m	10
KL200	75	100 m	10
KL150	30	100 m	10
4S30	30	100 m	10

System accessories:

Type	For system	Length m	Min. pack pcs
WRA60-100	KL600	100 m	1
WRA45-100	KL200	100 m	1
WRA30-100	KL150 / 4S30	100 m	1

Type	For system	Load capacity kg	Min. pack pcs
CGD-M6	KL150/4S30	15	10
CGD-M8	KL600/KL200	50	10

Examples of grippers:



FS standard terminal of the loop type. Universal.



CLM gripper for hanging luminaires.



STL8x20 through gripper. M8 thread, multifunctional.



LBO through clamp. HVAC installations.

Depending on our needs, we have a choice of different types of clamps, differing in functionality and load-bearing capacity. What they have in common is quick installation and infinite adjustment. All this means that the wires give us unlimited possibilities for fixing any suspension component. If you do not know which one to choose, please contact us and we will help you find the optimal solution.

Complete suspension set with wire, bracket and gripper for the selected lighting profile

Specification:

The full range is a complete set in the form of a bracket designed for the chosen lighting profile, gripper and prefabricated lengths of steel wire from 1 to 10 metres with a safe working load (SWL):

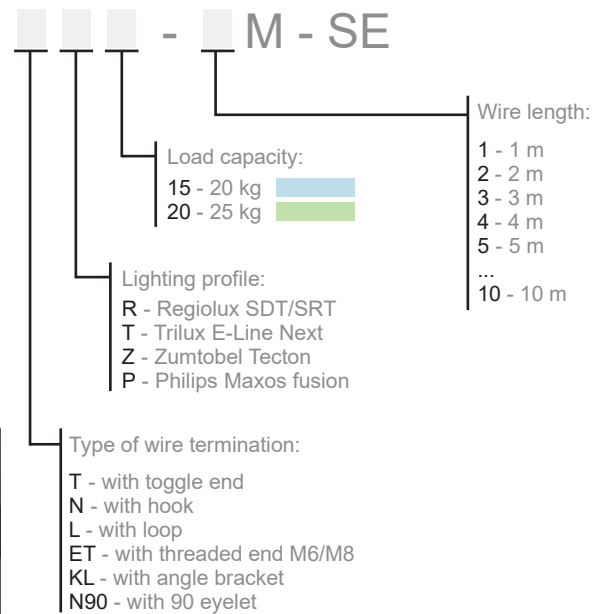
Applications:

- Luminaires
- Lighting channels and tracks:
 - Regiolum SDT/SRT
 - Trilux E-Line Next
 - Zumtobel Tecton
 - Philips Maxos fusion
 - other on request...

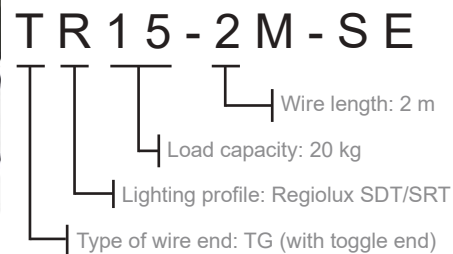
20 kg 25 kg



Order type:



Example:



Other lengths available on request.

Examples of applications:





Steel wire rope, system, stranded (7x7)/(7x19)



Type	Length m	SWL kg	Min. pack roll
WRA15-100 (7x7)	200	25	1
WRA20-100 (7x7)	100	55	1
WRA25-100 (7x7)	100	85	1
WRA30-100 (7x7)	100	115	1
WRA60-100 (7x19)	100	500	1

Steel wire rope in a reel for creating wire suspensions with corresponding locking clamps.

Locking clamp with quick adjustment, 4Sprint



Type	For wire	SWL kg	Min. pack pcs
4S15	WRA15	15	10
4S20	WRA20	55	10
4S30	WRA30	115	10

Locking clamp for quick and easy suspension of components.
For WRA25 wire, use clamp 4S30. Set with SWL of 85 kg.

Locking clamp with quick adjustment, Rize



Type	For wire	SWL kg	Min. pack pcs
KL100	WRA20	50	10
KL150	WRA30	120	10
KL600	WRA60	500	10

Locking clamp for quick and easy suspension of components.

Universal device lock, two washers and nut



Type	Thread	SWL kg	Min. pack pcs
STL8x20	M8	55	10
STL8x20-D3	M8	110	10
STL10x20	M10	110	10

Universal clamp with thread for creating wire suspensions. Central cable outlet. Recommended torque for tightening the lock nut is 8 nm.

The load capacity of the clamp depends on the type of fSprint wire used. The specified safe working load (SWL) values are shown in the table opposite.

For wire	SWL kg
WRA15	25
WRA20	55
WRA25	85
WRA30	110

Universal device lock, with square washer and sliding nut



Type	Thread	SWL kg	Min. pack pcs
STL8x20-R	M8	55	10
STL8x20-D3R	M8	110	10

Universal clamp with thread for creating wire suspensions. Central cable outlet. Recommended torque for tightening the lock nut is 8 nm.

The load capacity of the clamp depends on the type of fSprint wire used. The specified safe working load (SWL) values are shown in the table opposite.

For wire	SWL kg
WRA15	25
WRA20	55
WRA25	85
WRA30	110



Universal device lock, with side exit, two washers and nut



Type	Thread	SWL kg	Min. pack pcs
STLS8x20	M8	55	10
STLS8x20-D3	M8	110	10

Universal clamp with thread for creating wire suspensions. Central cable outlet. Recommended torque for tightening the lock nut is 8 nm.

The load capacity of the clamp depends on the type of **fS** wire used. The specified safe working load (SWL) values are shown in the table opposite.

For wire	SWL kg
WRA15	25
WRA20	55
WRA25	85
WRA30	110

Lighting gripper



Type	Thread	SWL kg	Min. pack pcs
CLM5F	M5	15	10
CLM6F	M6	15	10

Attractive design clip with adjustable wire length, for mounting in lighting brackets. Complete with fixing screw with the thread of your choice.

Lighting gripper with hook



Type	SWL kg	Min. pack pcs
CLMHOOK	15	10

Clip with hook and adjustable wire length, for suspending lightweight lamps or other items.

Ceiling barrel



Type	Thread	SWL kg	Min. pack pcs
CLB	-	15	10
CLB-M6	M6	15	10

Ceiling bracket with an attractive design, for mounting T/TG type wire suspensions in concrete.

Hook for trapezoidal ceiling



Type	SWL kg	Min. pack pcs
TH1	80	10

Sheet metal hook for individual wire suspensions of any length.

Carabiner



Type	Dimension mm	SWL kg	Min. pack pcs
K550	5 x 50	100	10
K660	6 x 60	120	10
K770	7 x 70	180	10
K880	8 x 80	230	10

Carabiner for universal applications.

Eye bolt, universal



Type	Thread	Full length mm	Min. pack pcs
SO50-M6/21	M6	50	10
SO80-M6/51	M6	80	10
SO80-M8/40	M8	40	10
SO80-M10/32	M10	80	10
SO120-M10/72	M10	120	10

Bolt with eyelet for universal use.

Eye bolt, industrial



Type	Thread	Full length mm	Min. pack pcs
SOI60-M6/30	M6	30	10
SOI80-M8/40	M8	40	10
SOI100-M10/50	M10	50	10

Bolt with eyelet for universal use.

Catenary wire clamp



Type	Thread	For wire	Min. pack pcs
CGD-M6	M6	max. 3 mm	10
CGD-M8	M8	max. 6 mm	10

Clamp for mounting on a horizontal support line as a substructure for installing wire suspensions. To be used with wire rope type ET/ETG.

Girder support clamp, hammer-in



Type	Opening mm	Flange thickness mm	Min. pack pcs
ZN-4-8	Ø 7	4 - 8	10
ZN-8-14	Ø 7	8 - 14	10
ZN-14-20	Ø 7	14 - 20	10

Support clamp for mounting on I-beams, for suspending wire rope suspensions to steel structures.

Girder support clamp, bolted



Type	Thread	Flange thickness mm	Min. pack pcs
ZNM-8	M8	0 - 18	10
ZNM-10	M10	0 - 20	10

Support clamp for mounting on I-beams, for suspending wire rope suspensions to steel structures.

Wire anchor



Type	Anchor dimension m	Min. pack pcs
KD50	50 x ø2	10

Easy and quick installation of the wire anchor by inserting and locking into a drilled M8 hole.



LBO bracket, with STL8x20 device lock



Type	Bracket dimension (excl. gripper) mm	Min. pack pcs
LBO	64 x 50 x 40	10

Dedicated to HVAC installations, including but not limited to the suspension of ventilation ducts.

ZBO bracket, with STL8x20 device lock



Type	Bracket dimension (excl. gripper) mm	Min. pack pcs
ZBO	76 x 50 x 30	10

Dedicated to HVAC installations, including but not limited to the suspension of ventilation ducts.

LBS bracket, with STL8x20 device lock



Type	Bracket dimension (excl. gripper) mm	Min. pack pcs
LBS	98 x 25 x 38	10

Dedicated to HVAC installations, including but not limited to the suspension of ventilation ducts.

ZBS bracket, with STL8x20 device lock



Type	Bracket dimension (excl. gripper) mm	Min. pack pcs
ZBS	73.5 x 63.5 x 32	10

Dedicated to HVAC installations, including but not limited to the suspension of ventilation ducts.

Turnbuckle, hook/eye



Type	Thread	Type of	Min. pack pcs
TB-EH-M6	M6	hook/eye	10
TB-EH-M8	M8	hook/eye	10
TB-EH-M10	M10	hook/eye	10

Turnbuckle, ending in a hook on one side and an eyelet on the other.

Turnbuckle, eye/eye



Type	Thread	Type of	Min. pack pcs
TB-EE-M6	M6	eye/eye	10
TB-EE-M8	M8	eye/eye	10
TB-EE-M10	M10	eye/eye	10

Turnbuckle, ending in an eyelet on both sides.

Turnbuckle, hook/hook



Type	Thread	Type of	Min. pack pcs
TB-HH-M6	M6	hook/hook	10
TB-HH-M8	M8	hook/hook	10
TB-HH-M10	M10	hook/hook	10

Turnbuckle, ending in a hook on both sides.

Supporting structure, clamp M12



Type	For threaded rod	Min. pack pair
CSTM12-16	M12	1

Clamp for the purpose of mounting a horizontal support line to an I-beam. Provides a secure and safe attachment of the line to the steel structure. The set includes two clamps, and two M12 eyebolts. Use together with M12 threaded rod (to be purchased separately).

Eyelet plate



Type	Plate dimension mm	Min. pack pcs
SP100	100 x 100	10

Steel mounting plate with eyelet. Allows the steel wire to be hooked to any substrate.

Ring nut



Type	Thread	Min. pack pcs
ITE-M8	M8	10
ITE-M10	M10	10
ITE-M12	M12	10

Threaded eyelet for universal use.

Internal threaded anchor



Type	Thread	Anchor length mm	Min. pack pcs
KWG06	M6	25	10
KWG08	M8	30	10

Internal threaded anchor for installation in concrete.

Suspension fitting for acoustic panels



Type	Dimensions mm	Min. pack pcs
SPR20	22 x 43	10

Spring for easy and quick suspension of acoustic panels. To be screwed into the foam or felt panel, then use the chosen wire suspension system depending on the substrate.



LED panel suspension set



Type	Length m	Min. pack pcs
KPL-LEDP-15	1.5	1

Set of 4 wires including clips for adjusting the length of the wire and clips for mounting to the substrate.

T-profile clip



Type	Fixing	Min. pack pcs
CLK-M6	M6 thread	100
CLK-O	eyelet	100

To be used together with wires to attach wire suspensions to suspended ceilings.

Protective corner



Type	For wire mm	Min. pack pcs
PACS	ø1 - 6	10

Protects the edge of the structural element at the contact with the steel cable.

Protective profile for wire



Type	For wire mm	Min. pack m
PPVC3	ø1 - 3	100
PPVC6	ø4 - 6	100

Plastic safety profile for coating the steel wire to isolate it from the suspended component when it is needed.

Wire rope cutters



Type	For wire	Min. pack pcs
CUTW	max. 3 mm	1

Prevents the line from fraying after cutting. Provides a smooth finish after cutting the wire.

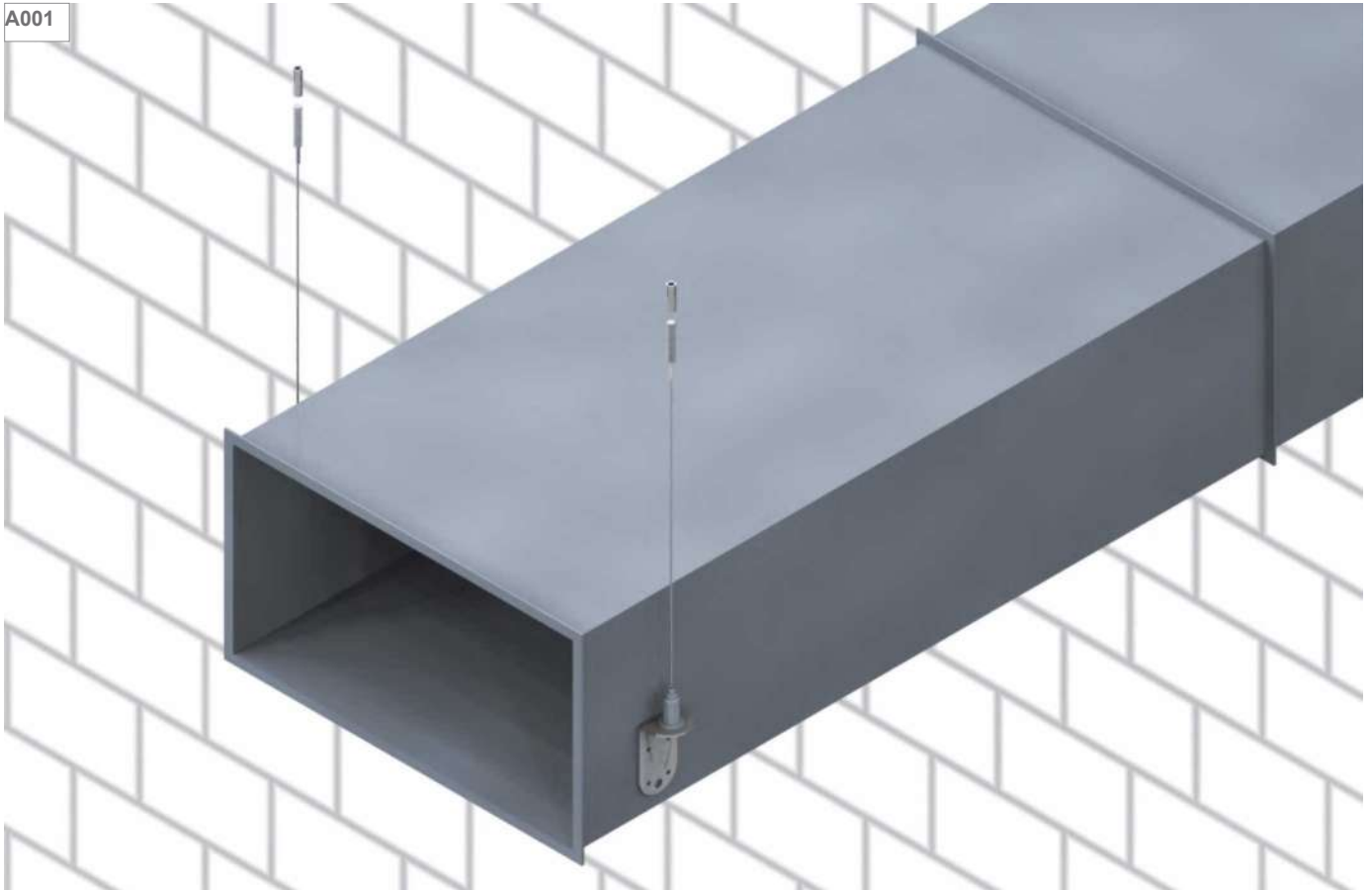
Wire rope tensioning tool



Type	For wire	Min. pack pcs
TFTOOL	max. 6 mm	1

For tensioning wire rope in horizontal wire rope installations as a substructure for wire rope suspensions.

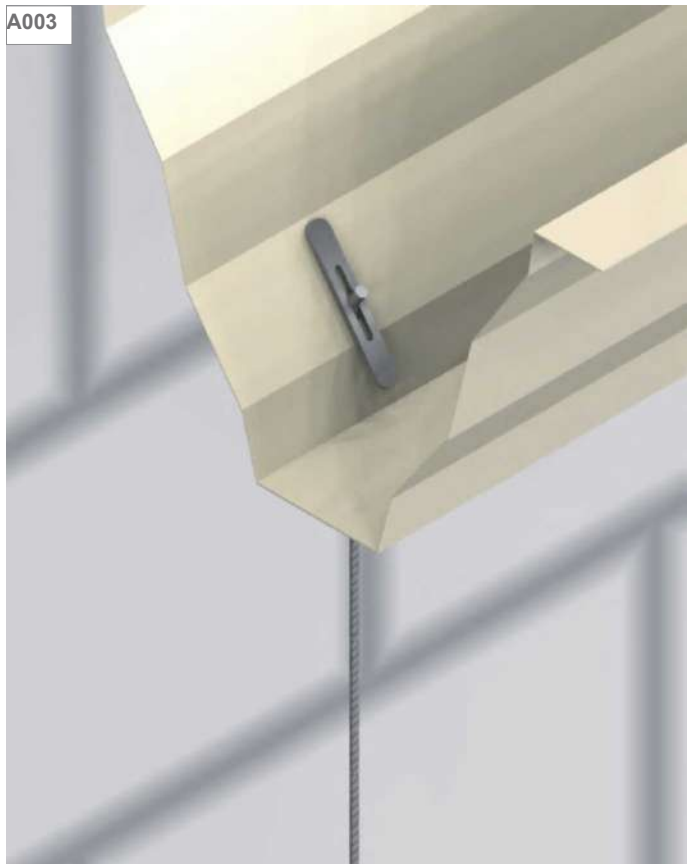
A001



A002



A003



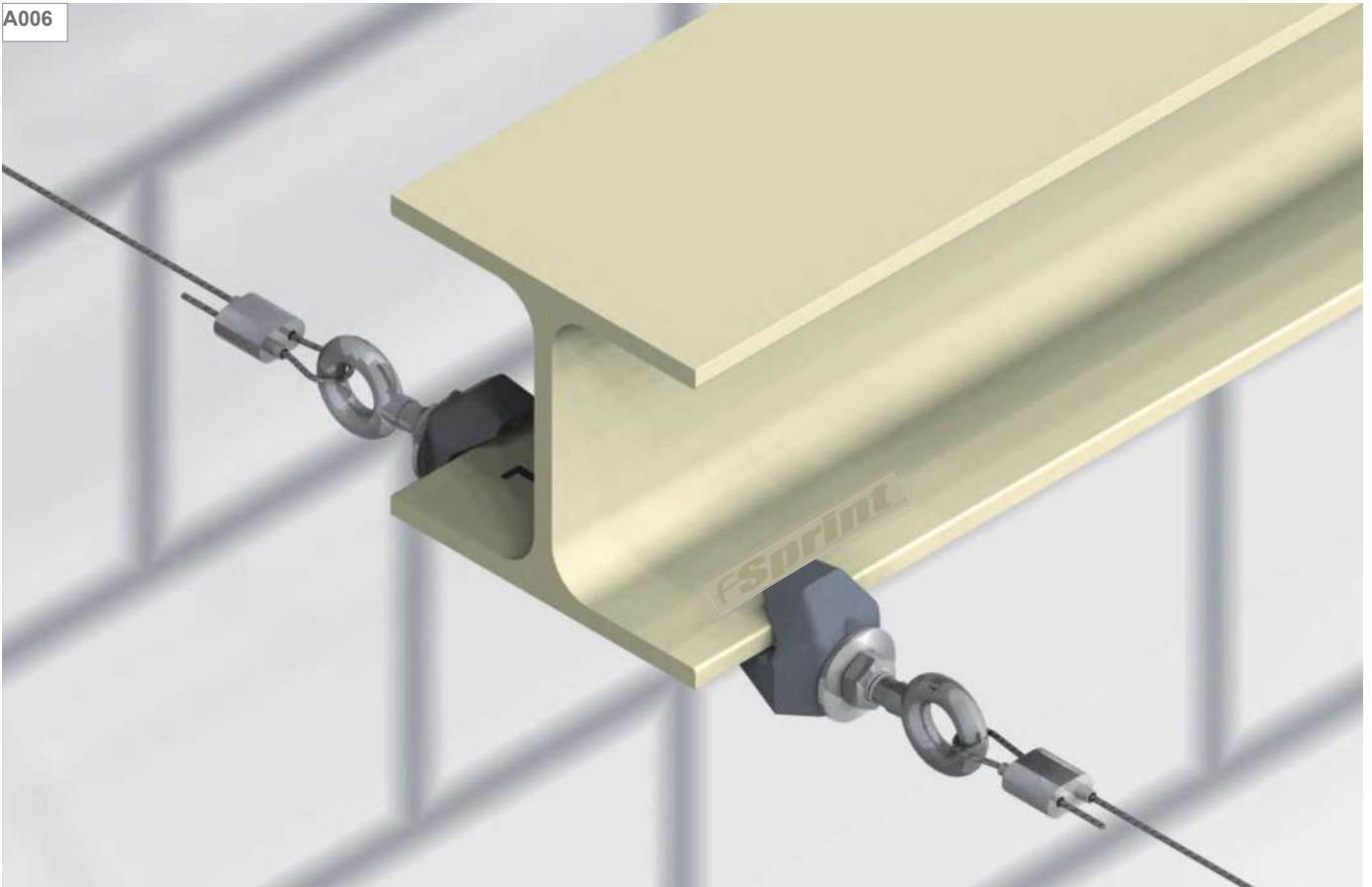
A004



A005



A006



A007

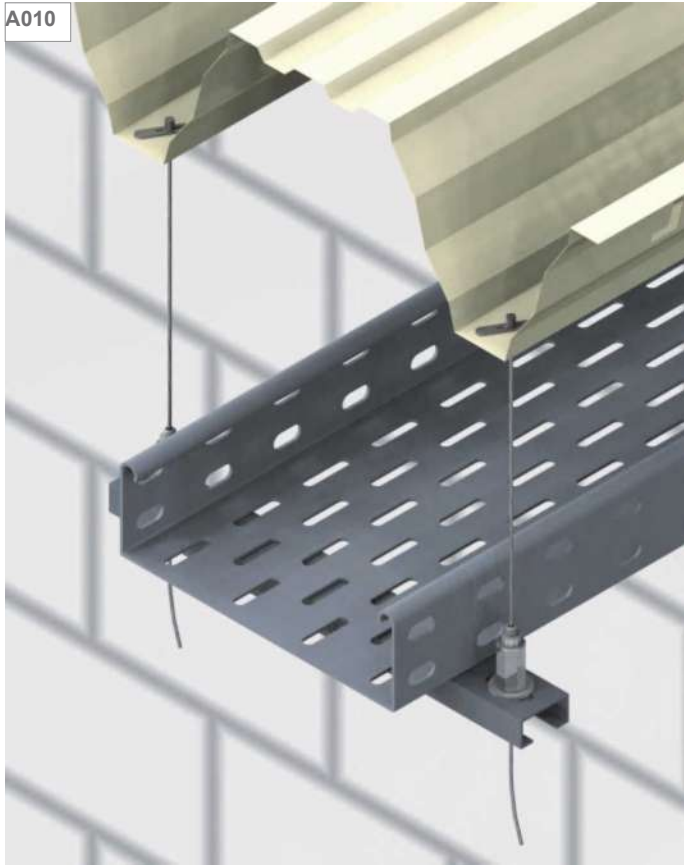


A008



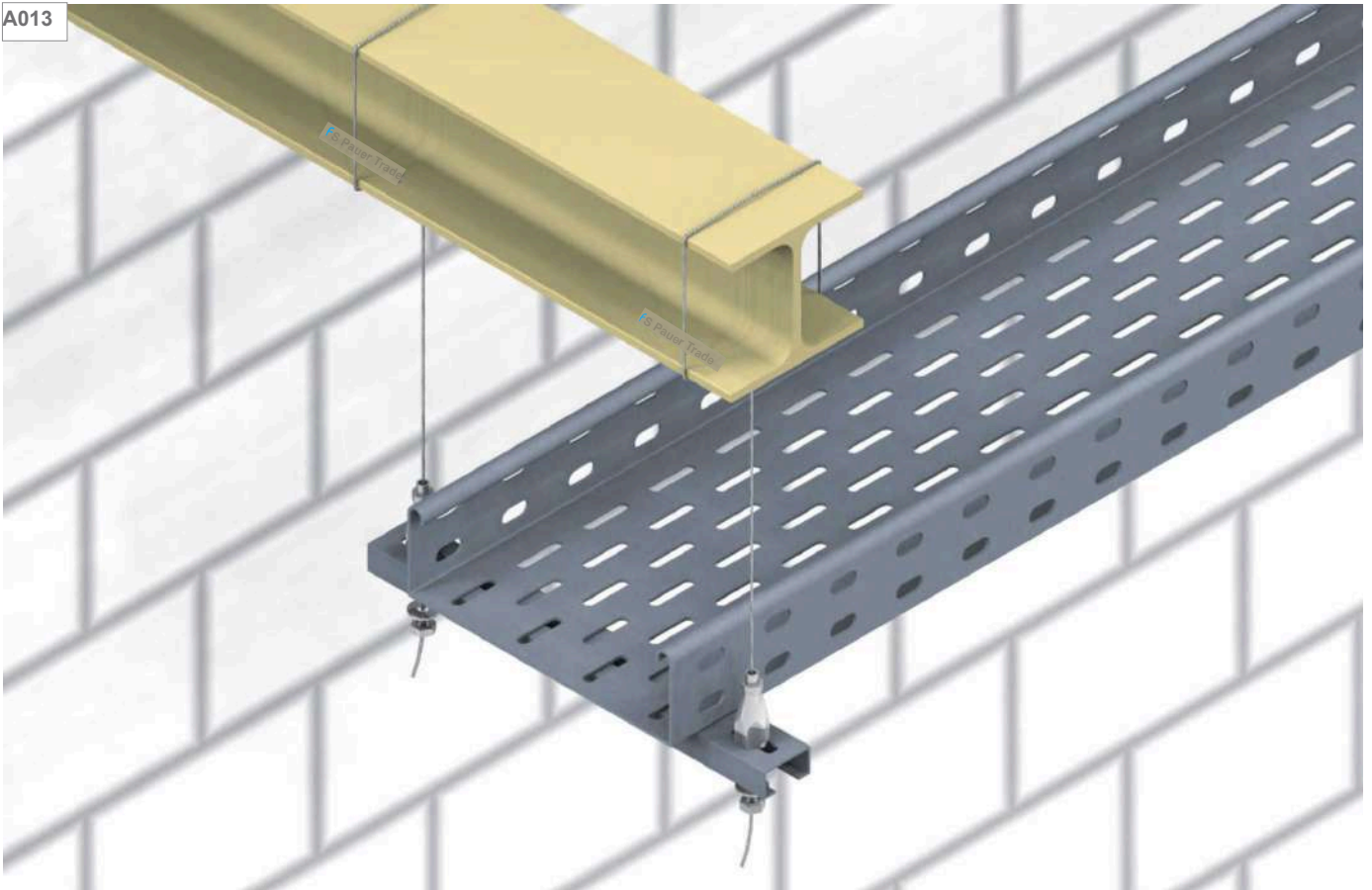
A009



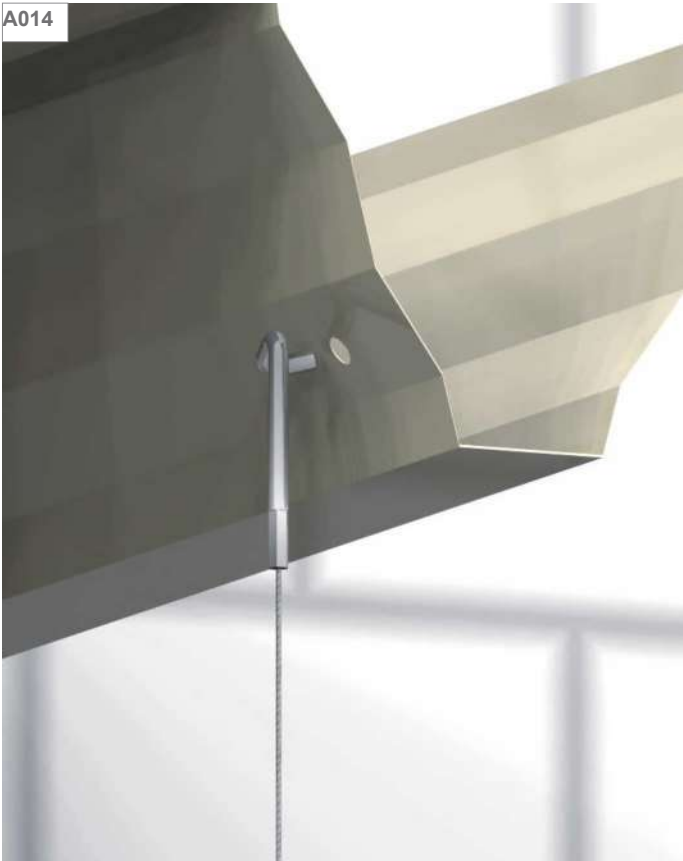




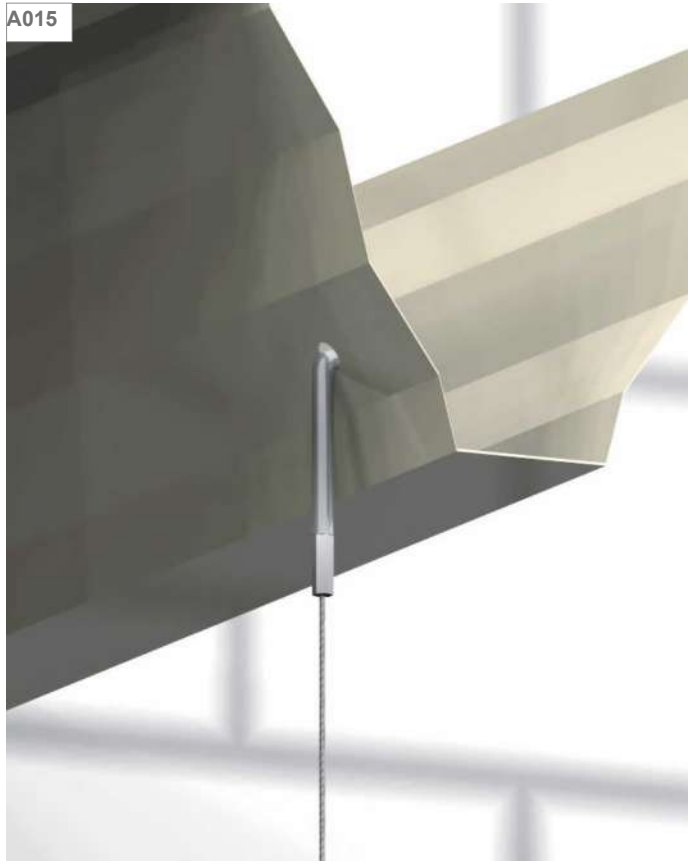
A013



A014



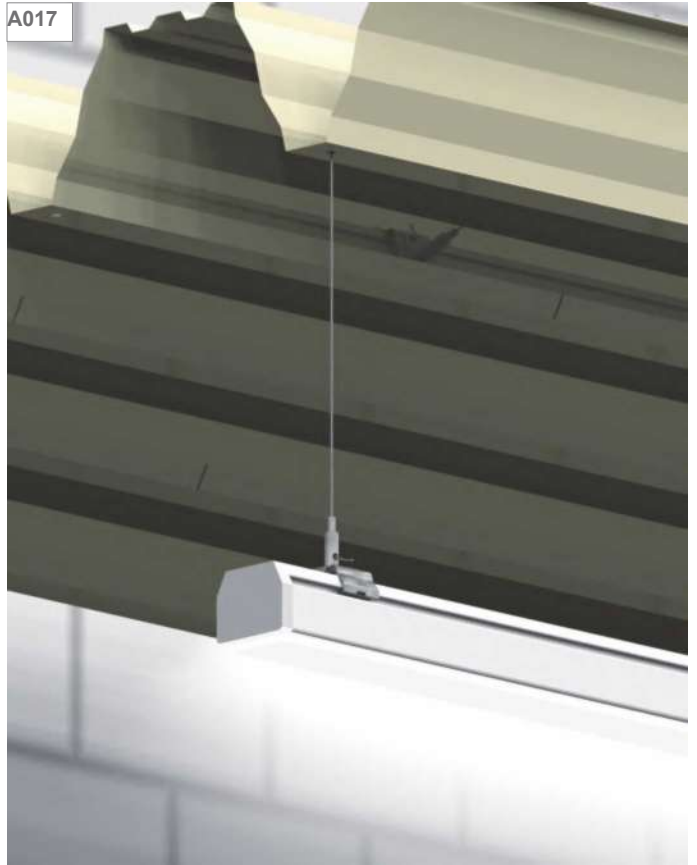
A015



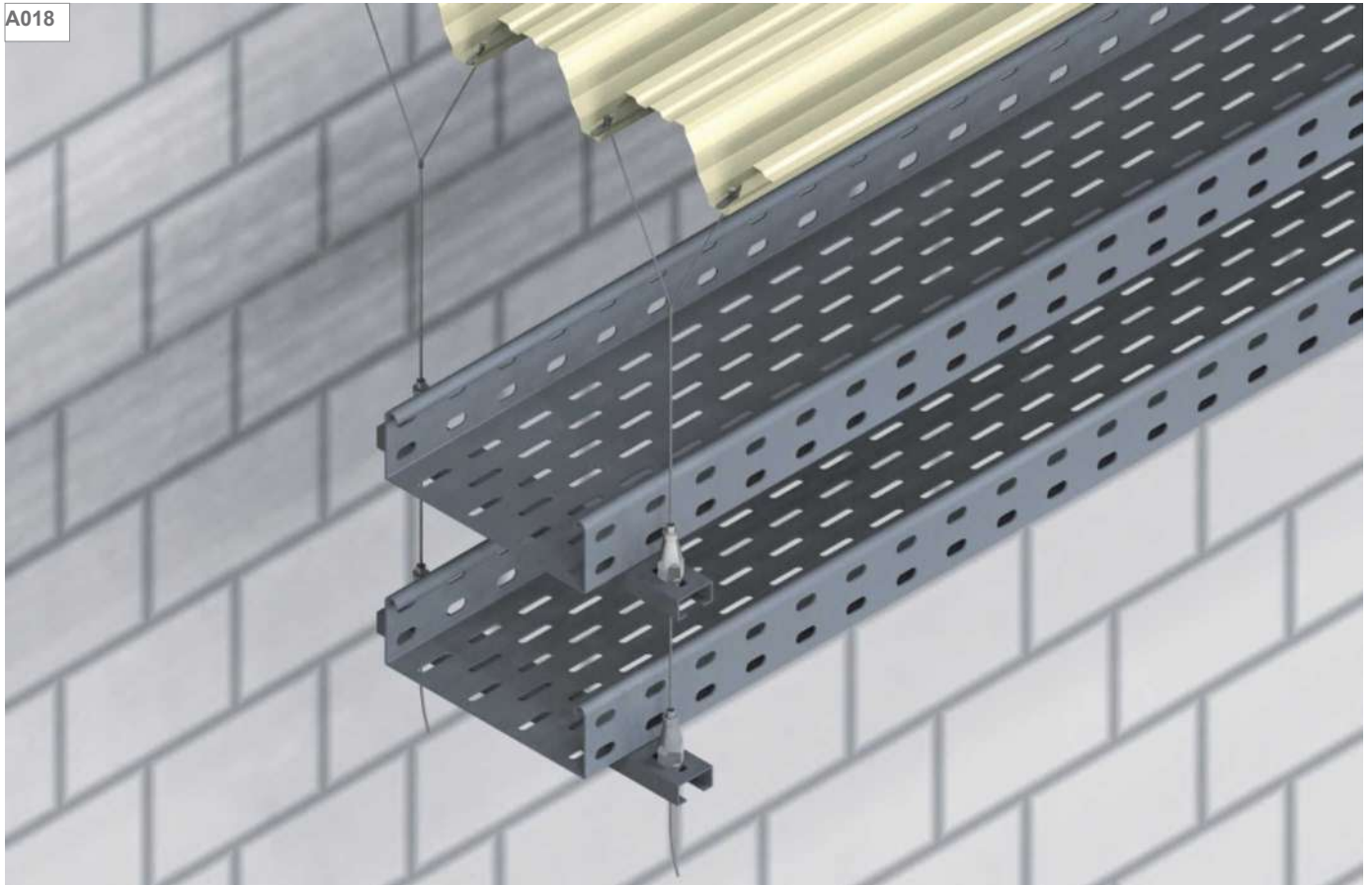
A016

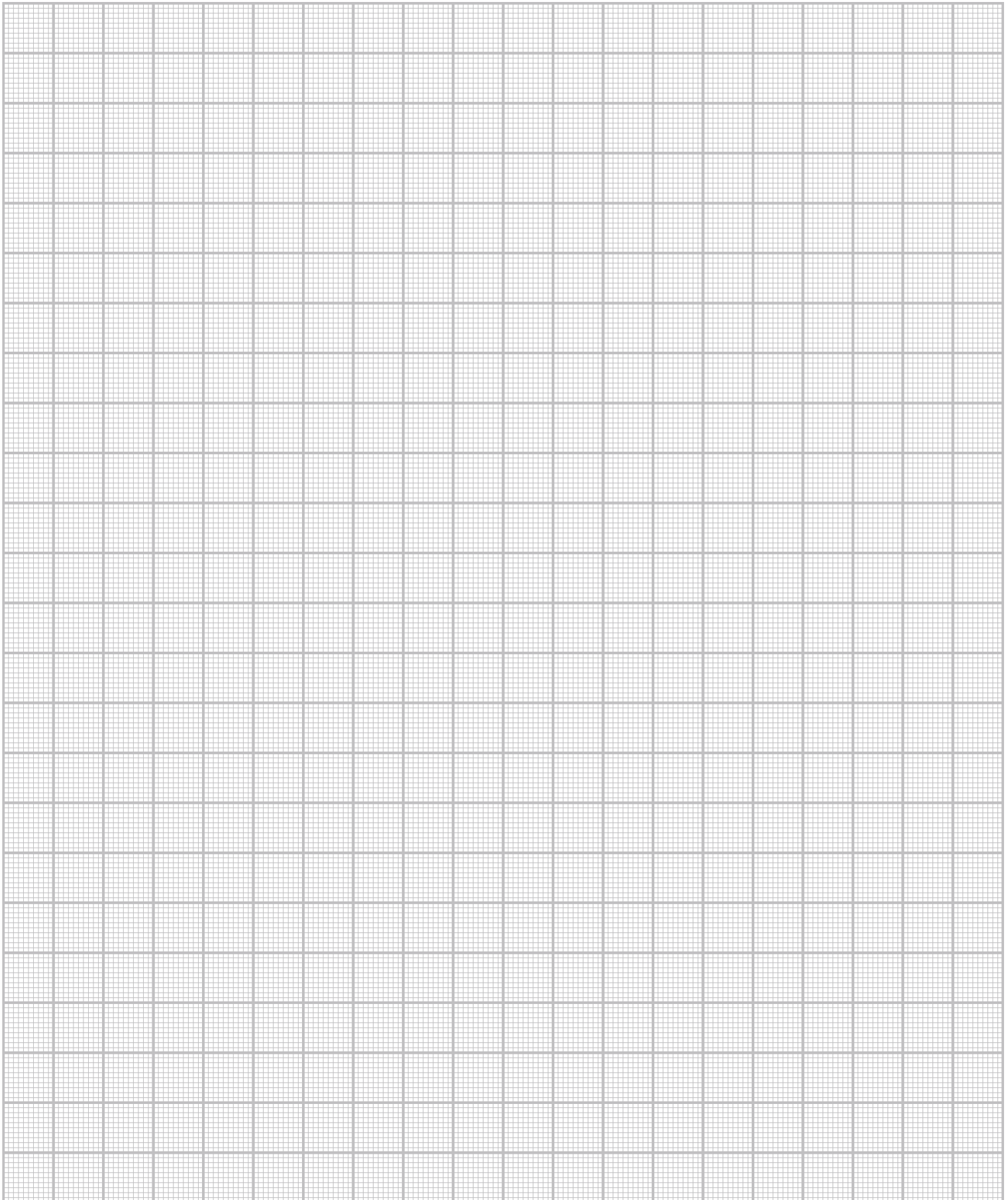


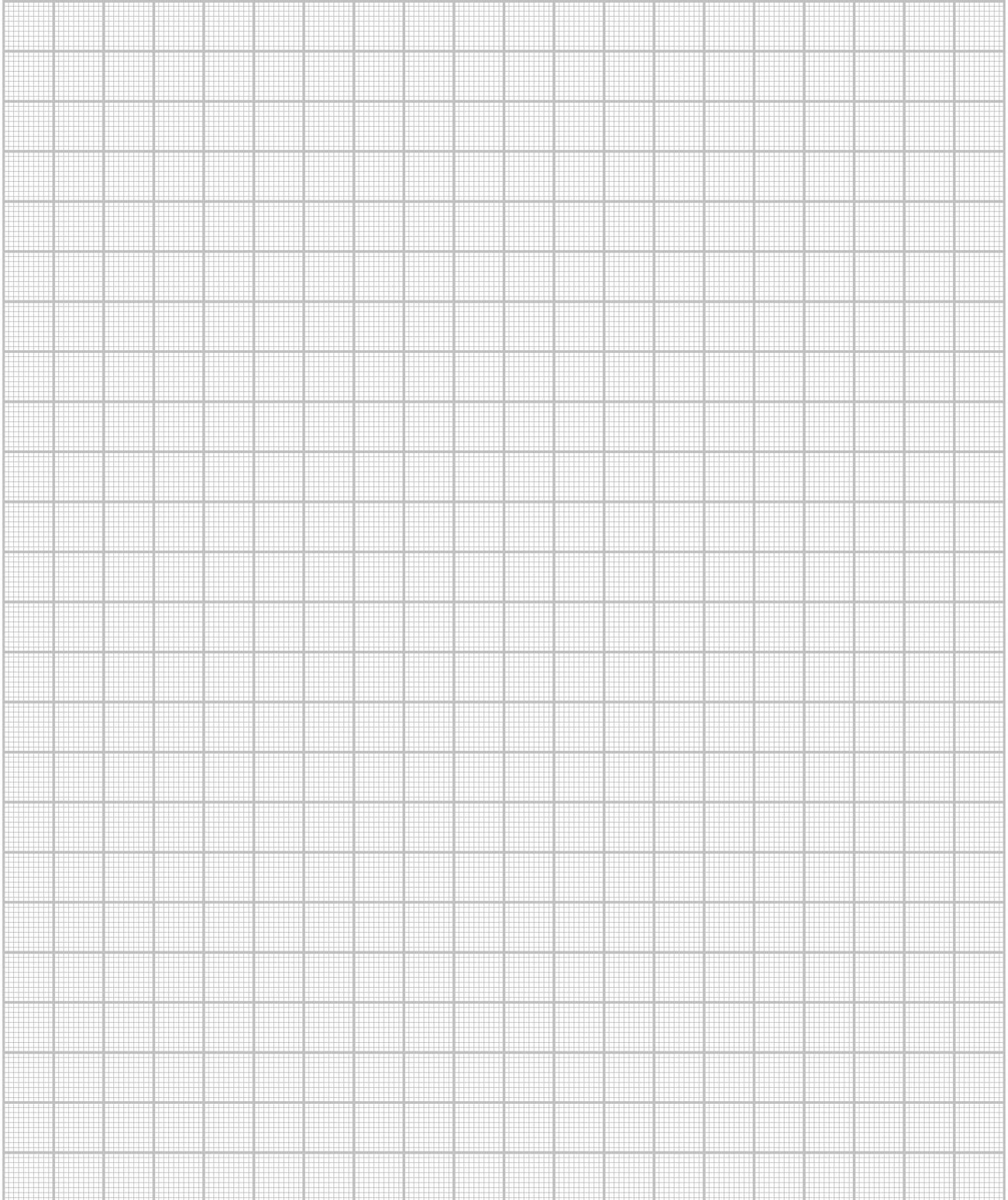
A017



A018









OFFICE

Technium Supply Kft.
Dunakeszi, Szabadka utca 18.
2120
Magyarország

PHONE

Office:
+36 70 6113453



Sales dept:

E-MAIL: ajanlat@technium.hu